

## Power-Trax.de

Special Duty Vehicles - technical Distribution

<http://www.power-trax.de>

info @ power-trax.de

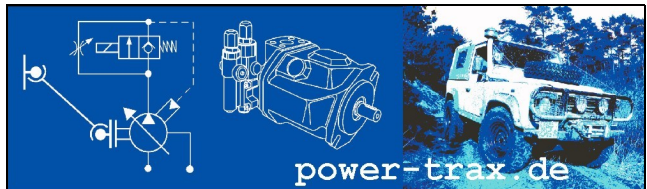
Tel.: +49 - (0) 906 / 9999 849 17

Mobil: +49 - (0)163 / 4321 435

Fax: +49 - (0) 906 / 9999 849 18

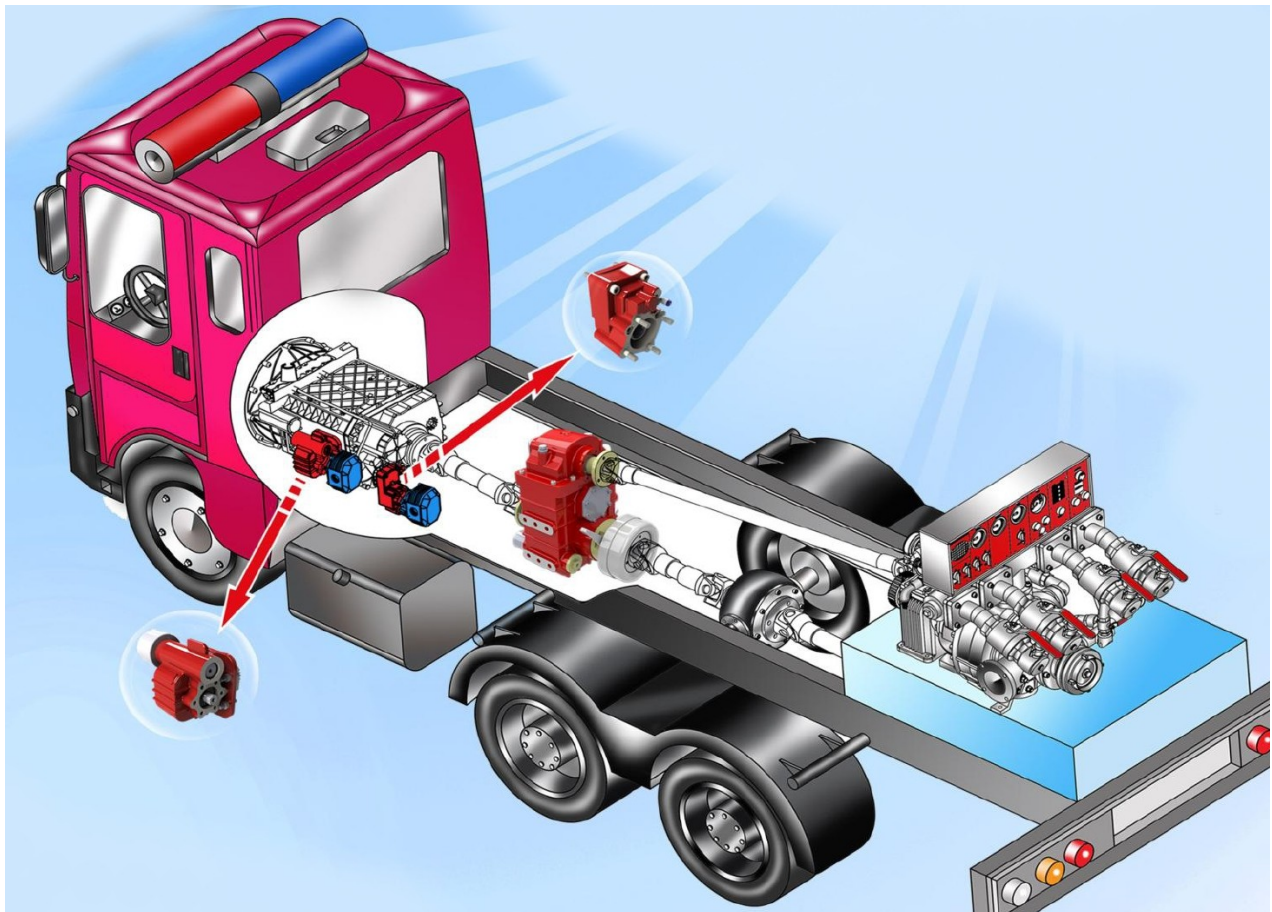
Dietrich-Bonhoeffer-Str. 28

D-86609 Donauwoerth



# Split-Shaft-PTOs

for 4x4 and utility vehicles



## 2014 Catalogue

All prices net, excl. VAT - General terms and conditions of business apply

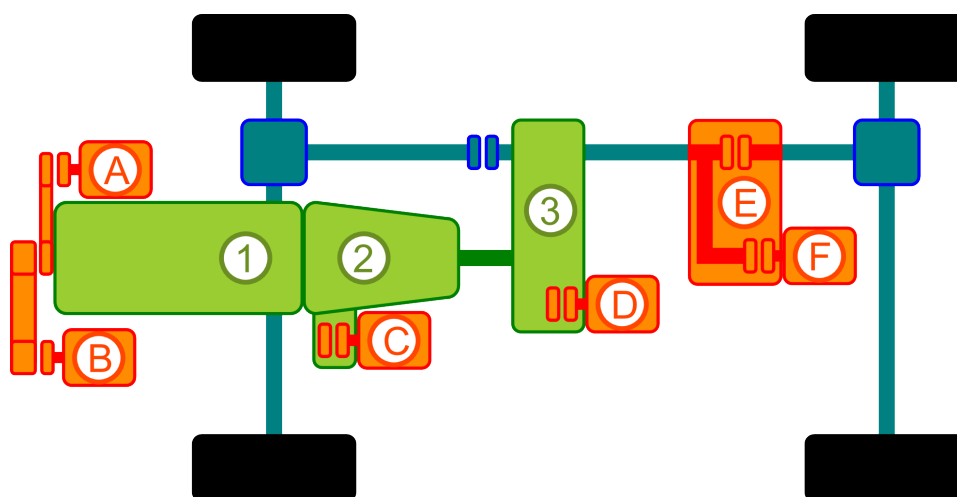
**power-trax.de**

Special Duty Vehicles - technical Distribution



## Basics on PTO Drivetrain Concepts

Here we have some basic introduction in PTO concepts.



*Pic 1: PTO-Variants*  
1: Engine - 2: Gearbox - 3: Transfer Gearbox

Depending on your vehicle several variants of PTO installations are possible. This catalogue covers application E and F.

Variant	Details	Power
<b>A</b>	Belt driven PTO, electromagnetic or mechanical clutch. Uses stock belt drive. Requires mounting space at engine. PTO can partially be used during driving.	7-10kW
<b>B</b>	Tooth belt driven PTO, mechanical clutch. Requires additional belt drive. Requires extended mounting space at engine. PTO can partially be used during driving.	to 30kW
<b>C</b>	Gearbox coupled PTO, mechanical clutch. Gearbox needs to be prepared or expandable for PTO. PTO can partially be used during driving.	to 460kW
<b>D</b>	Transfer gearbox coupled PTO, mechanical clutch. Gearbox needs to be prepared or expandable for PTO. PTO can only be used stationary.	to 76kW
<b>E/F</b>	Driveshaft coupled PTO, mechanical clutch. Fits all RWD vehicles and vehicles with selectable 4WD. PTO can only be used stationary.	22 to 136kW

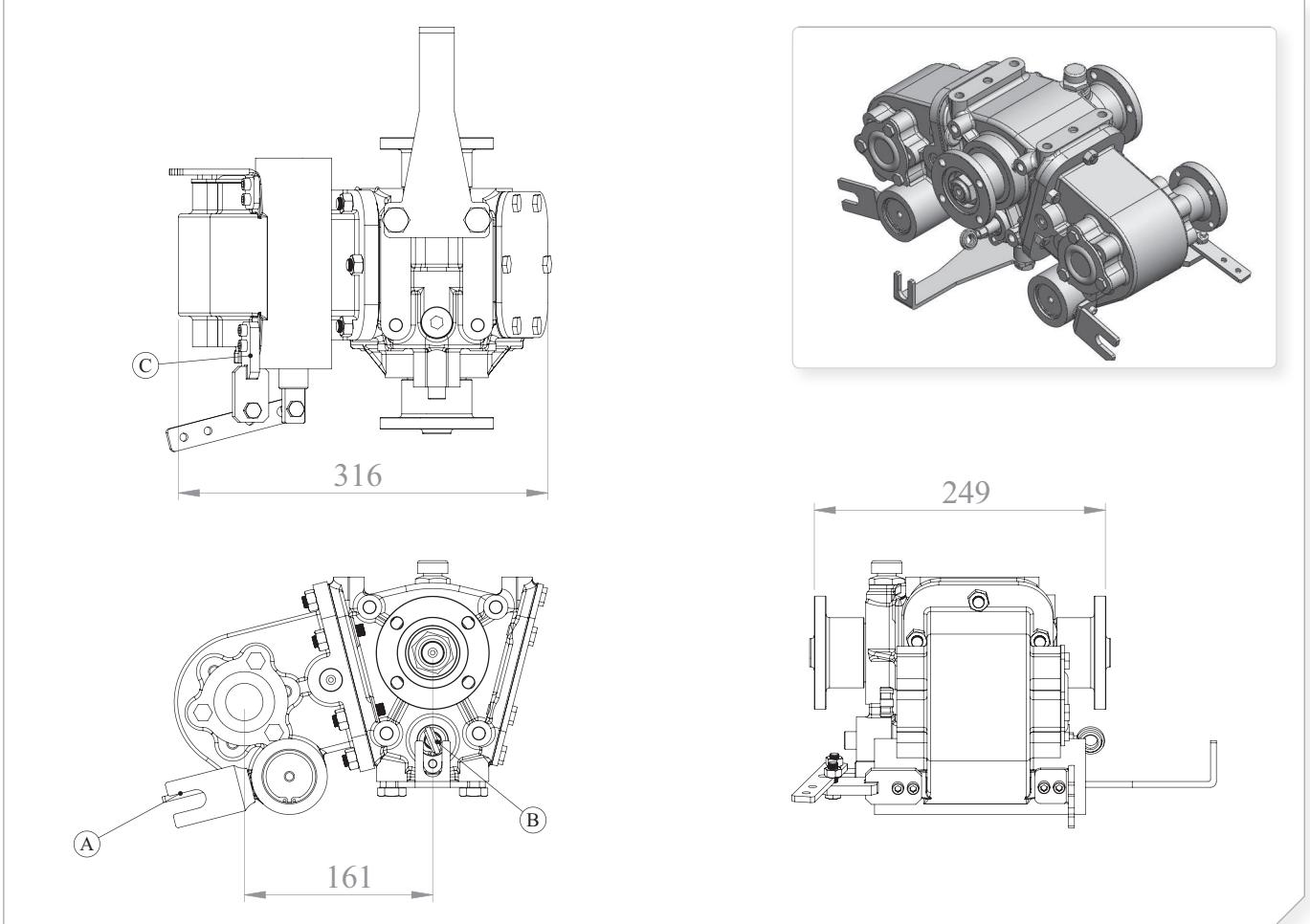
<b>Araç Tipi</b> Vehicle Type	FORD TRANSIT-MERCEDES SPRINTER-VOLKSWAGEN-LIA BONGO-OPEL-FIAT-BMC
<b>Şanzıman Tipi</b> Gearbox Type	

Ürün Kodu / Product Code

**UARA.210**



Ürün Görünümleri / Products View



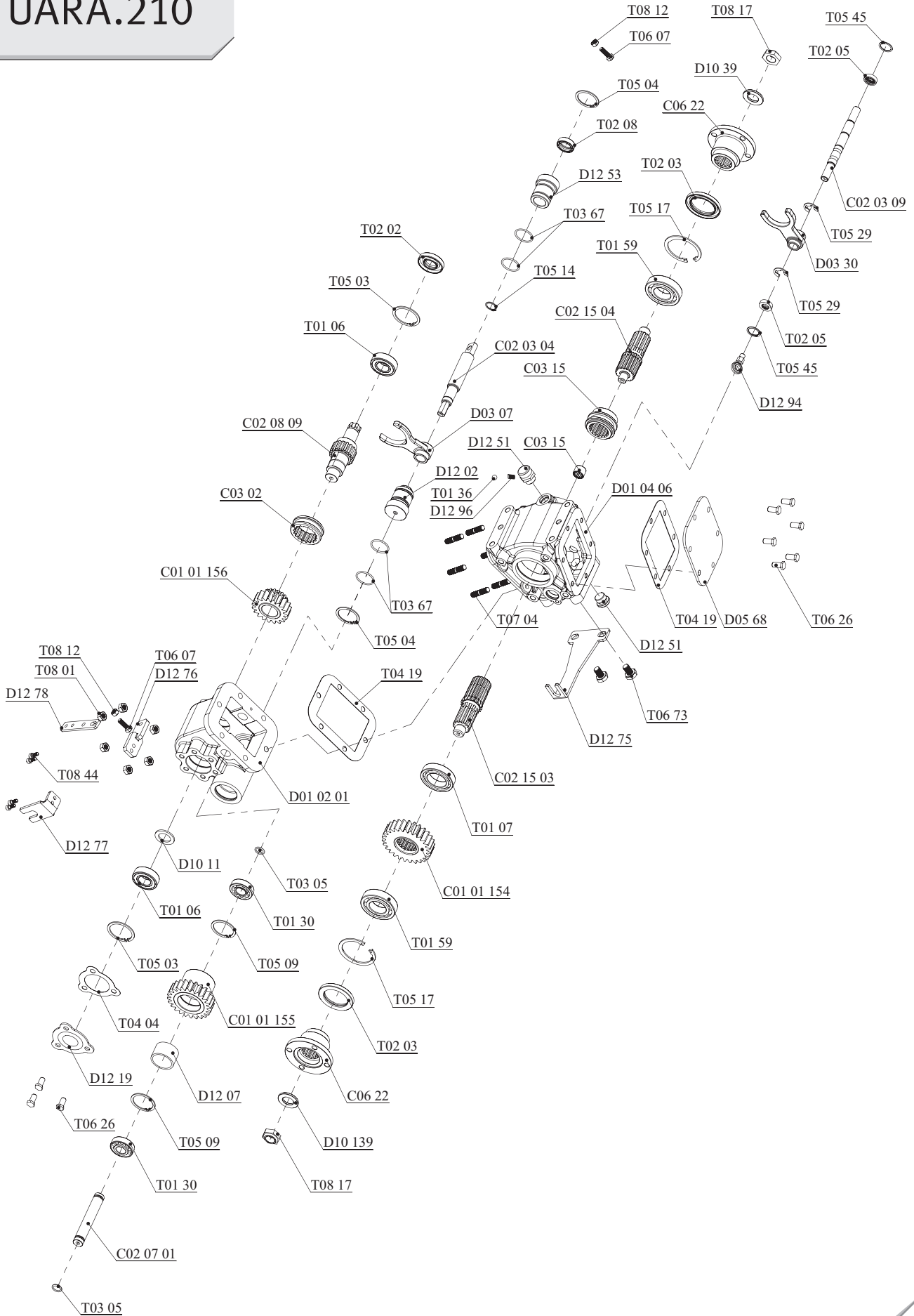
Opsiyonlar / Options

<b>A :</b> P.T.O. Kontrol (Mekanik/Havalı)	<b>A :</b> PTO's Control (Mechanic/Pneumatic)
<b>B :</b> Ara Şanzıman Kontrol (Mekanik)	<b>B :</b> Split Shaft Unit Control (Mechanic)
<b>C :</b> DIN 5463 (6x21x25)	<b>C :</b> DIN 5463 (6x21x25)

Teknik Bilgi / Technical Data

Güç / Power (Kw)	Maksimum Tork / Maximum Torque (Kw)		Çevrim Oranı Ratio	Bağlantı Şekli Mounting Side	Kumanda Kontrol Control Type
	Nm	Kgm			
1000 Dev./Dak.					
22	245	25X2 Her iki çıkış için	1/1.42	<b>ŞAFT / SHAFT</b>	<b>HAVALI - MEKANİK / PNEUMATIC - MECHANIC</b>
				<b>Ağırlık / Weight (Kg)</b>	<b>Dönüş Yönü / Rotation Sense</b>
				36	<b>SOL / COUNTERCLOCKWISE (CCW)</b>

# UARA.210



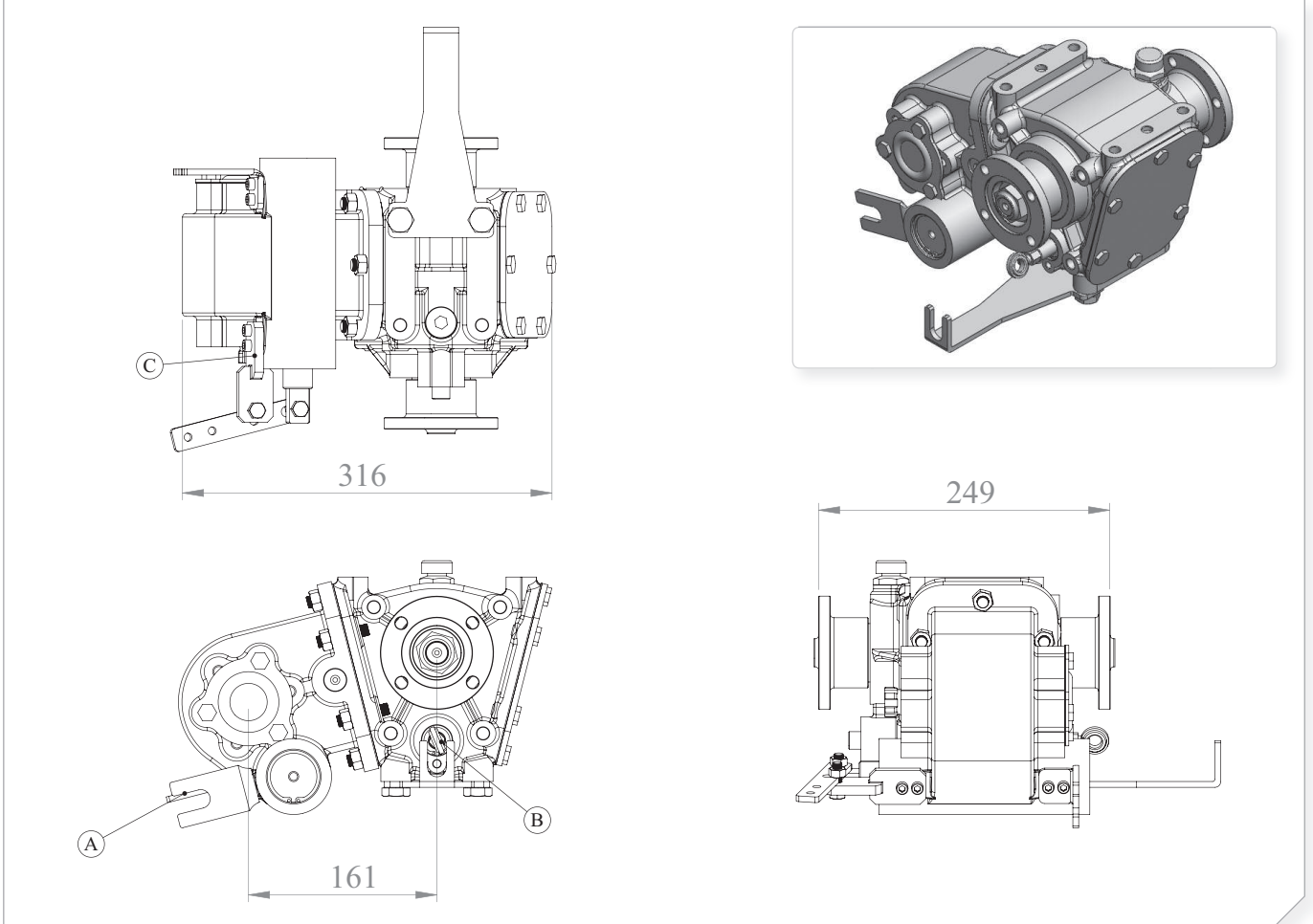
<b>Araç Tipi</b> Vehicle Type	FORD TRANSIT-MERCEDES SPRINTER-VOLKSWAGEN-LIA BONGO-OPEL-FIAT-BMC
<b>Şanzıman Tipi</b> Gearbox Type	

Ürün Kodu / Product Code

**UARA.210.1**



Ürün Görünümleri / Products View



Opsiyonlar / Options

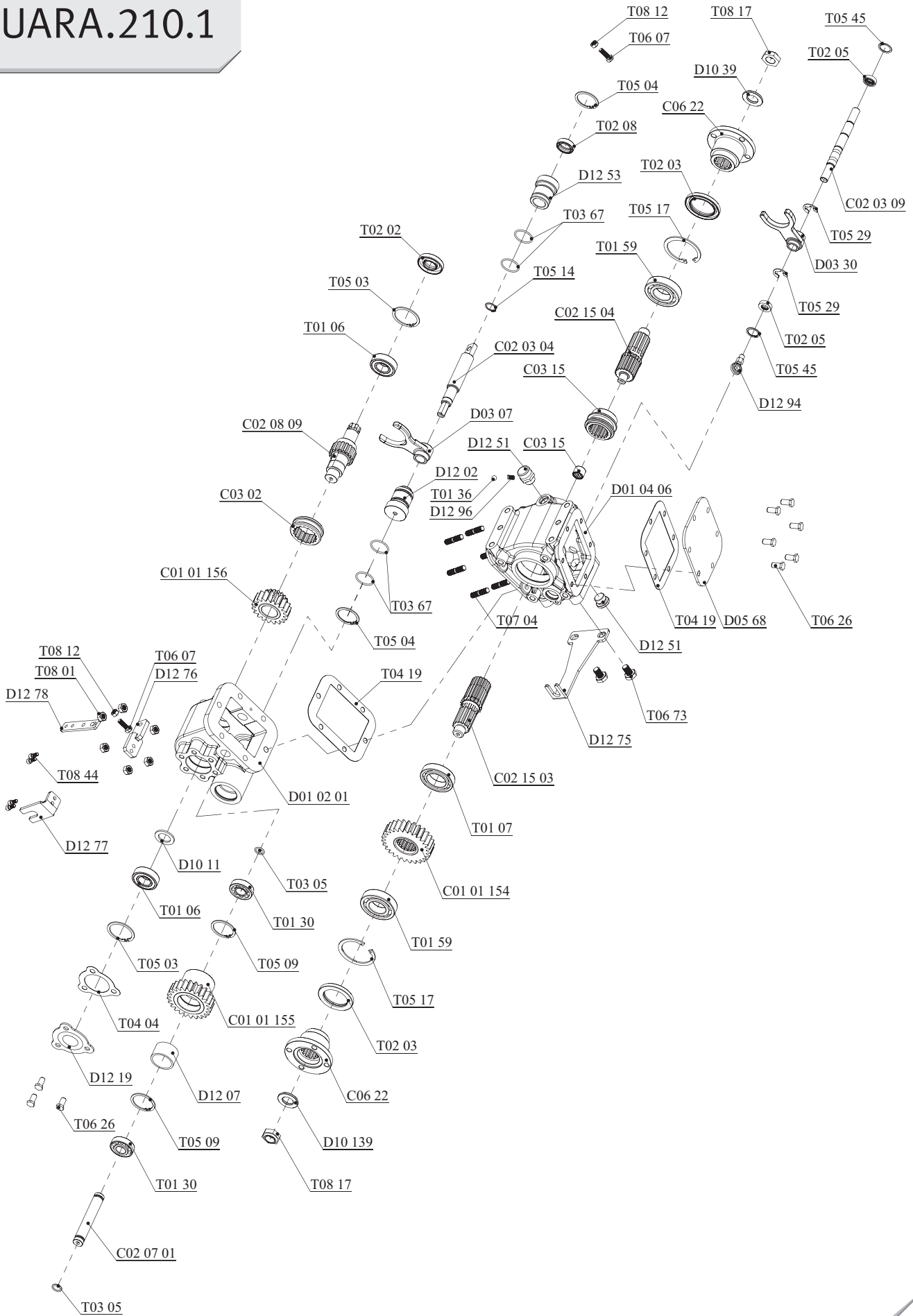
- A :** P.T.O. Kontrol (Mekanik/Havali)  
**B :** Ara Şanzıman Kontrol (Mekanik)  
**C :** DIN 5463 (6x21x25)

- A :** PTO's Control (Mechanic/Pneumatic)  
**B :** Split Shaft Unit Control (Mechanic)  
**C :** DIN 5463 (6x21x25)

Teknik Bilgi / Technical Data

Güç / Power (Kw)	Maksimum Tork / Maximum Torque (Kw)		Çevrim Oranı Ratio	Bağlantı Şekli Mounting Side	Kumanda Kontrol Control Type
	Nm	Kgm			
1000 Dev./Dak.					
22	245	25X2 Her iki çıkış için	1/1.42	<b>ŞAFT / SHAFT</b>	<b>HAVALI - MEKANİK / PNEUMATIC - MECHANIC</b>
				<b>Ağırlık / Weight (Kg)</b>	<b>Dönüş Yönü / Rotation Sense</b>
				36	<b>SOL / COUNTERCLOCKWISE (CCW)</b>

# UARA.210.1



Araç Tipi / Vehicle Type:

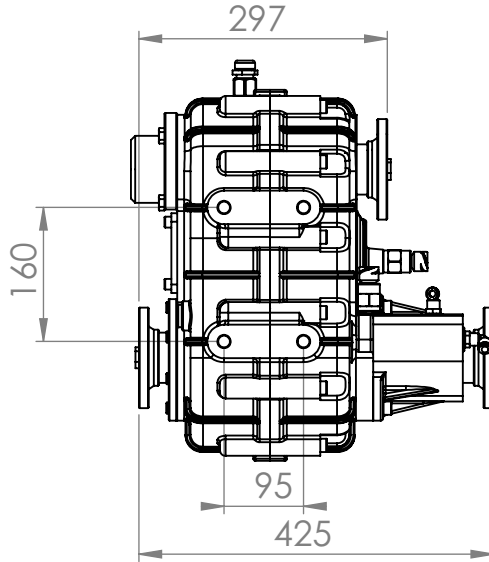
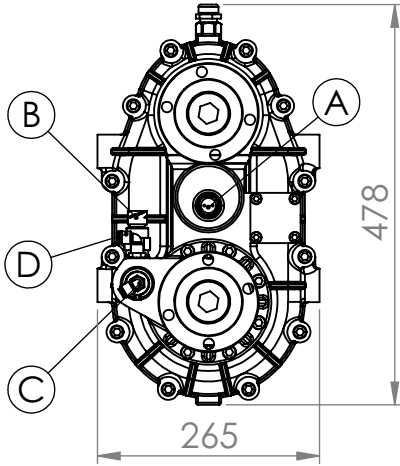
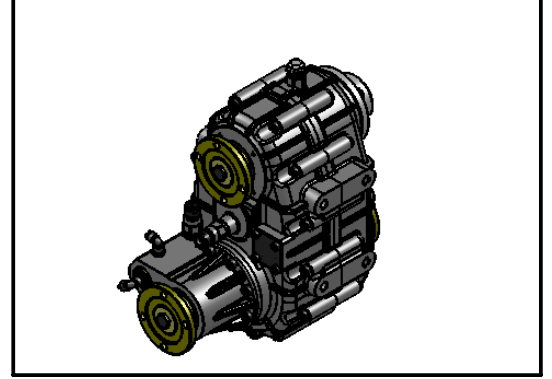
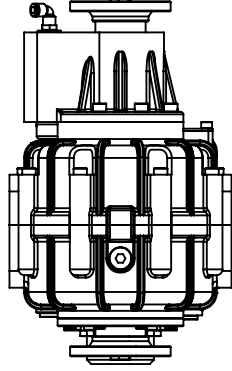
3.5-5 TON HAFİF TİP 4X4 ARAÇ

Ürün Kodu :/ Product Code:

**UARA.300**

Şanzıman Tipi / Gearbox Type: 4X4 DİF. KİLİTLİ TEK DEVİRLİ ARA ŞANZIMAN

### ÜRÜN GÖRÜNÜMLERİ / PRODUCTS VIEW



### OPSİYONLAR / OPTIONS

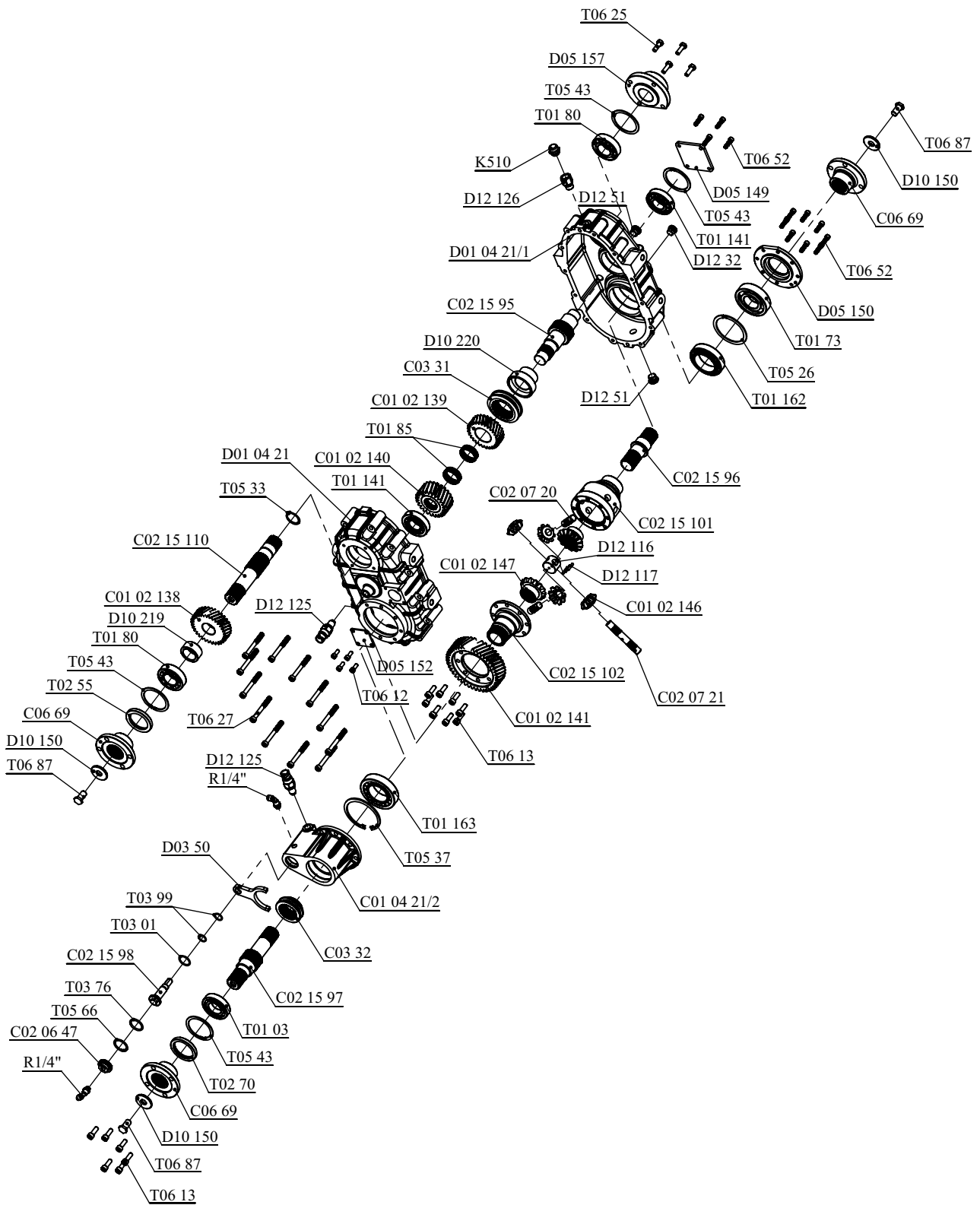
A: Elektrik Müşürü (Devir Kontrol)  
B: Elektrik Müşürü (Difransiyel Kilidi)  
C: Hava Girişi (Devreye Alma)  
D: Hava Girişi (Devreden Çıkartma)

A : Electric Swith (Rpm Control)  
B : Electric Switch (For Lock to Dif.)  
C : Air Inlet (Engage)  
D : Air Inlet (Disengage)

### TEKNİK BİLGİ / TECHNICAL DATA

Güç (Kw) (Power) 1000 Dev./Dak.	Maksimum Tork (Max. Torque) Nm Kgm		Çevrim Oranı (Ratio)	Bağlantı Şekli (Mounting Side)	Kumanda Kontrol (Control Type)
178	1700	175	1/0.625	ŞAFT/SHAFT	HAVALI/PNEUMATIC
				Ağırlık (Kg) (Weight)	Dönüş Yönü (Rotation Sense)
				64	SOL/COUNTERCLOCKWISE(CCW)

# UARA.300





Araç Tipi / Vehicle Type:

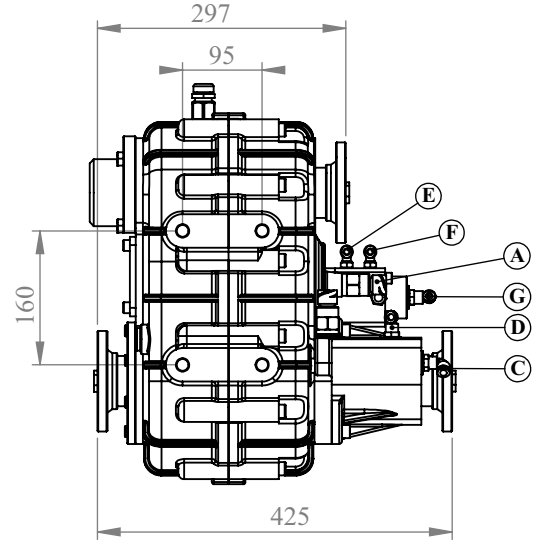
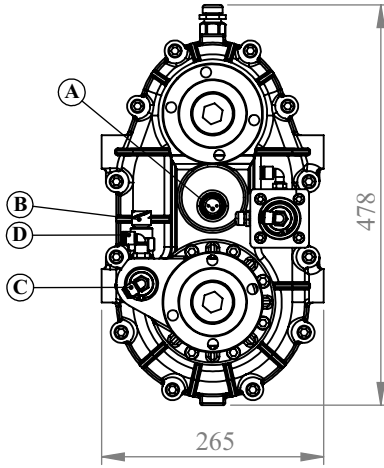
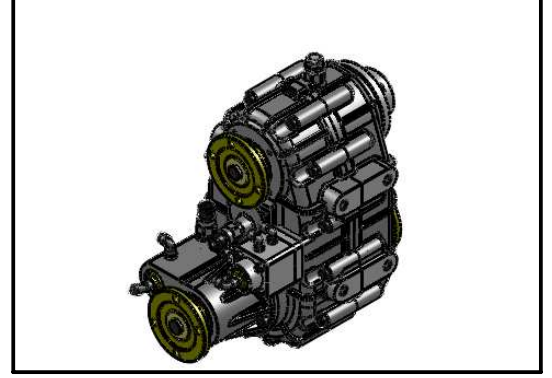
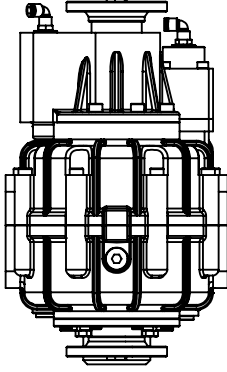
3.5-5 TON HAFİF TİP 4X4 ARAÇ

Ürün Kodu :/ Product Code:

UARA.301

Şanzıman Tipi / Gearbox Type: 4X4 DİF. KİLİTLİ ÇİFT DEVİRLİ ARA ŞANZIMAN

## ÜRÜN GÖRÜNÜMLERİ / PRODUCTS VIEW



## OPSİYONLAR / OPTIONS

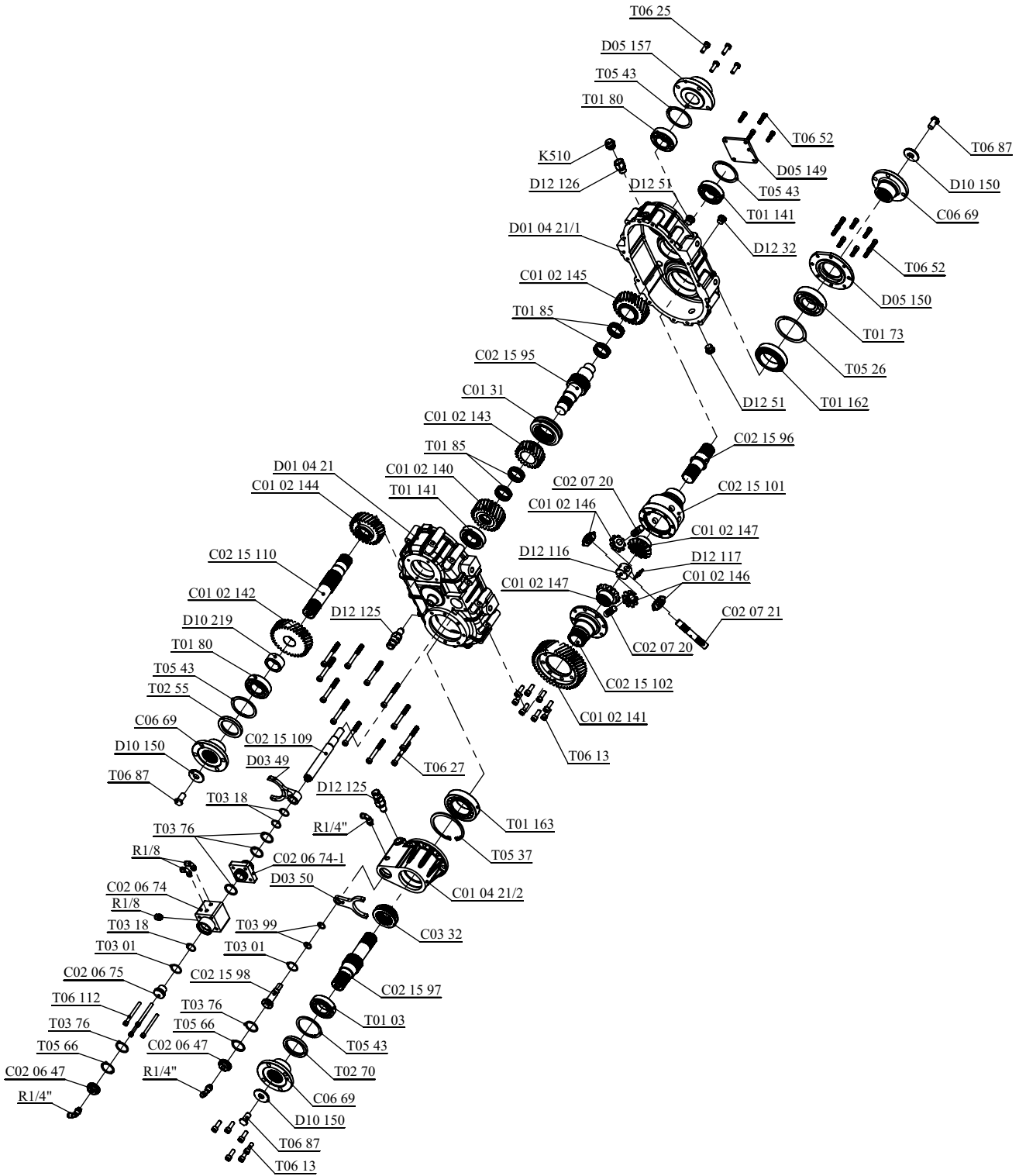
A : Elektrik Müşürü (Devir Sayıcı)  
 B : Elektrik Müşürü (Difransiyel Kilidi Devrede-Devre Dışı)  
 C : Hava Girişi (Defransiyel Kilidi Devrede)  
 D : Hava Girişi (Defransiyel Kilidi Devre Dışı)  
 E : Hava Girişi (Hızlı Devir (Seri) Devrede)  
 F : Hava Girişi (Yavaş Devir (Ağır) Devrede)  
 G : Hava Girişi (Araç Boşa Alma)(E ile Aynı Anda Kullanılır)

A : Electric Switch (Rpm Accounter)  
 B : Electric Switch (Engage-Disengage)  
 C : Air Inlet (PTO Differential Lock Engage)  
 D : Air Inlet (PTO Differential Lock Disengage)  
 E : Air Inlet (High Rpm Engage)  
 F : Air Inlet (Low Rpm Engage)  
 G : Air Inlet (Free Position)(With E At The Same Time)

## TEKNİK BİLGİ / TECHNICAL DATA

Güç (Kw) (Power) 1000 Dev./Dak.	Maksimum Tork (Max. Torque) Nm Kgm		Çevrim Oranı (Ratio)	Bağlantı Şekli (Mounting Side)	Kumanda Kontrol (Control Type)
178	1700	175	1/0.52 1/0.85	ŞAFT/SHAFT	HAVALI/PNEUMATIC
				Ağırlık (Kg) (Weight)	Dönüş Yönü (Rotation Sense)
				68	SOL/COUNTERCLOCKWISE(CCW)

# UARA.301



Araç Tipi / Vehicle Type:

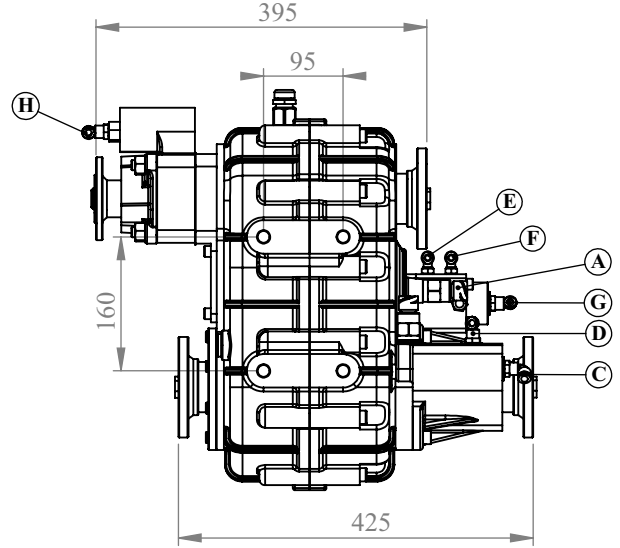
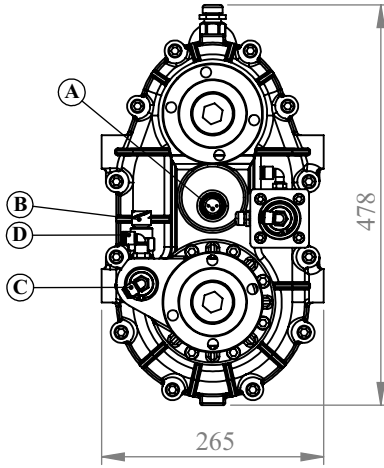
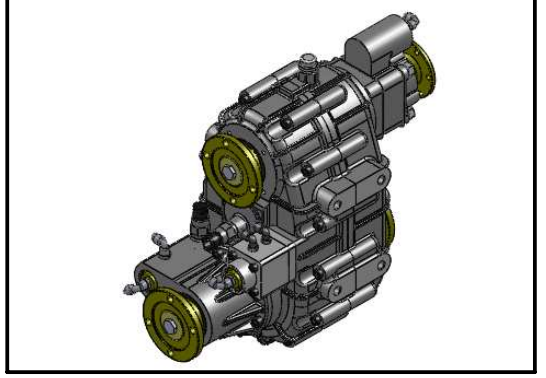
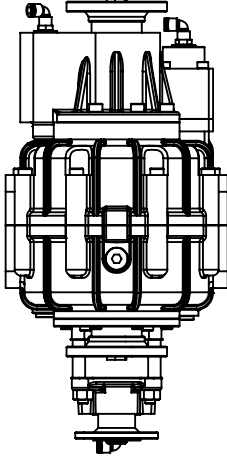
3.5-5 TON HAFİF TİP 4X4 ARAÇ

Ürün Kodu :/ Product Code:

UARA.302

Şanzıman Tipi / Gearbox Type: 4X4 DİF. KİLİTLİ ÇİFT DEVİRLİ ARA ŞANZIMAN İTFAİYE İÇİN (3 KOMUMLU AĞIR-SERİ-BOŞ)

## ÜRÜN GÖRÜNÜMLERİ / PRODUCTS VIEW



## OPSİYONLAR / OPTIONS

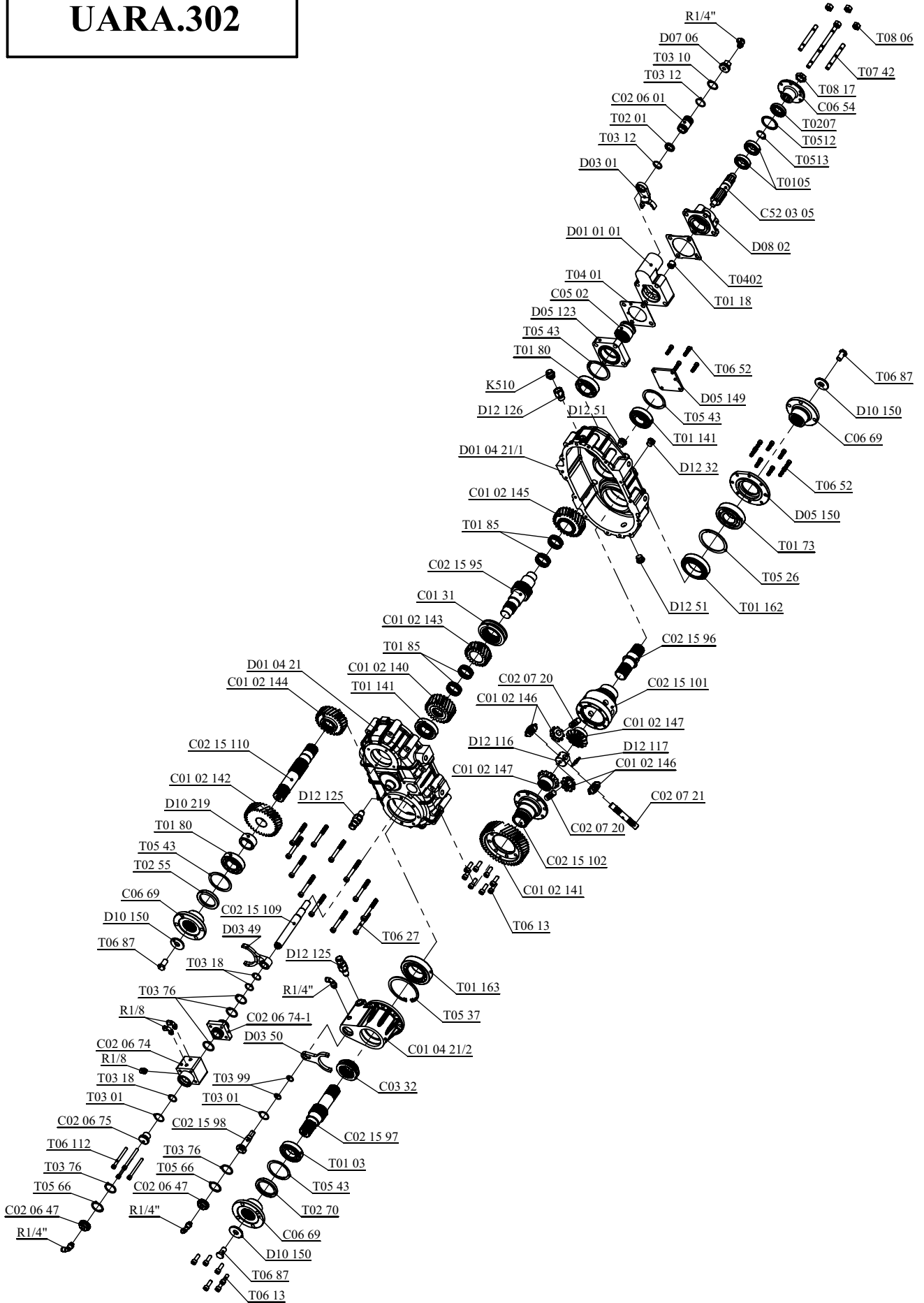
A : Elektrik Müşürü (Devir Sayıcı)  
 B : Elektrik Müşürü (Difransiyel Kilidi Devrede-Devre Dışı)  
 C : Hava Girişi (Defransiyel Kilidi Devrede)  
 D : Hava Girişi (Defransiyel Kilidi Devre Dışı)  
 E : Hava Girişi (Hızlı Devir (Seri) Devrede)  
 F : Hava Girişi (Yavaş Devir (Ağır) Devrede)  
 G : Hava Girişi (Aracı Boşa Alma)(E ile Aynı Anda Kullanılır)  
 H : Hava Girişi (Pompa Çıkışı Devrede)

A : Electric Switch (Rpm Accounter)  
 B : Electric Switch (Engage-Disengage)  
 C : Air Inlet (PTO Differential Lock Engage)  
 D : Air Inlet (PTO Differential Lock Disengage)  
 E : Air Inlet (High Rpm Engage)  
 F : Air Inlet (Low Rpm Engage)  
 G : Air Inlet (Free Position)(With E At The Same Time)  
 H : Air Inlet (Pump Output-Engaged)

## TEKNİK BİLGİ / TECHNICAL DATA

Güç (Kw) (Power) 1000 Dev./Dak.	Maksimum Tork (Max. Torque) Nm Kgm		Çevrim Oranı (Ratio)	Bağlantı Şekli (Mounting Side)	Kumanda Kontrol (Control Type)
178	1700	175	1/0.52 1/0.85	ŞAFT/SHAFT	HAVALI/PNEUMATIC
				Ağırlık (Kg) (Weight)	Dönüş Yönü (Rotation Sense)
				68	SOL/COUNTERCLOCKWISE(CCW)

# UARA.302



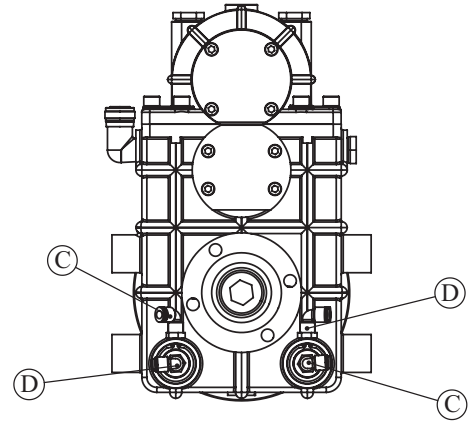
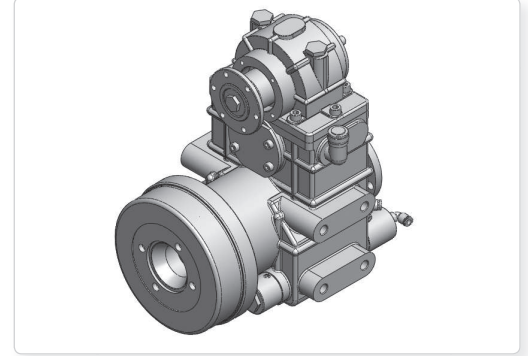
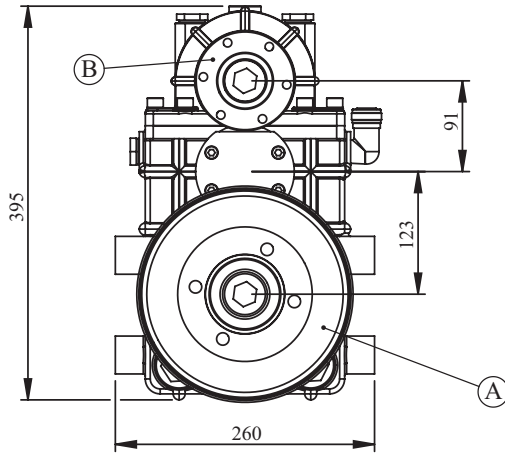
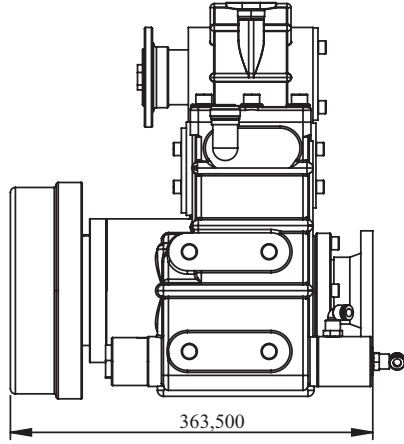
<b>Araç Tipi</b> Vehicle Type	İTFAİYE ARAÇLARI-YOL BAKIM ARAÇLARI FOR FIRE FIGHTING VEHICLES-FOR ROAD SERVICE VEHICLES
<b>Şanzıman Tipi</b> Gearbox Type	

Ürün Kodu / Product Code

**UARA.400**



Ürün Görünümleri / Products View



Opsiyonlar / Options

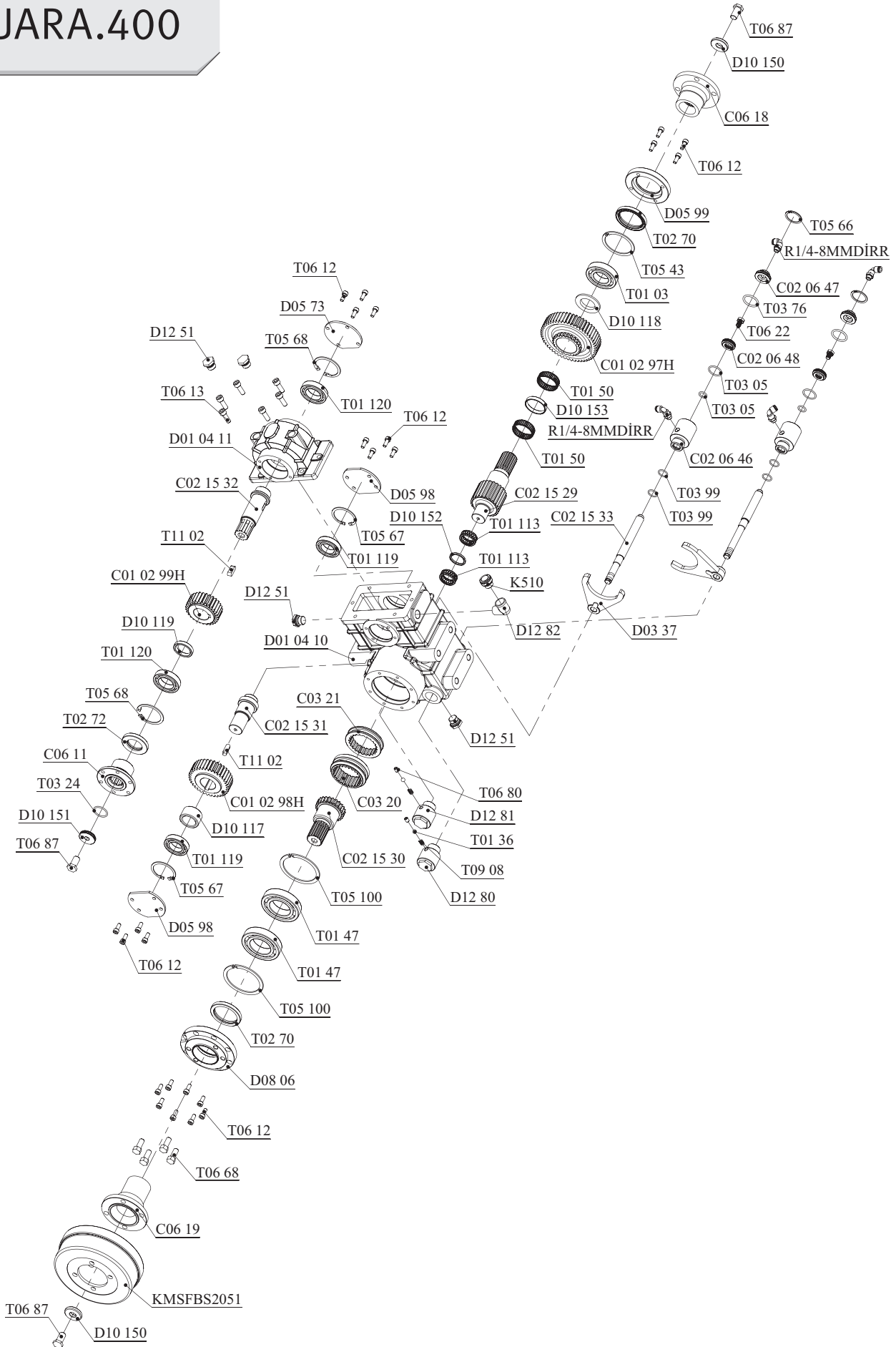
- A:** Fren Balata Sistemi (Mitsubishi-Hyundai-Isuzu-Hino)  
**B:** Flanş DIN 100  
**C:** Hava Girişi (Devreye Alma)  
**D:** Hava Girişi (Devreden Çıkartma)

- A:** Hand Brake System (Mitsubishi-Hyundai-Isuzu-Hino)  
**B:** Flange DIN 100  
**C:** Air Inlet (Engage)  
**D:** Air Outlet (Disengage)

Teknik Bilgi / Technical Data

Güç / Power (Kw)	Maksimum Tork / Maximum Torque (Kw)		Çevrim Oranı Ratio	Bağlantı Şekli Mounting Side	Kumanda Kontrol Control Type
	Nm	Kgm			
1000 Dev./Dak.					
82	785	80	1/1.8	<b>ŞAFT / SHAFT</b>	<b>HAVALI - MEKANİK / PNEUMATIC - MECHANIC</b>
				<b>Ağırlık / Weight (Kg)</b>	<b>Dönüş Yönü / Rotation Sense</b>
				60	<b>SOL / COUNTERCLOCKWISE (CCW)</b>

# UARA.400



**Araç Tipi**  
Vehicle Type

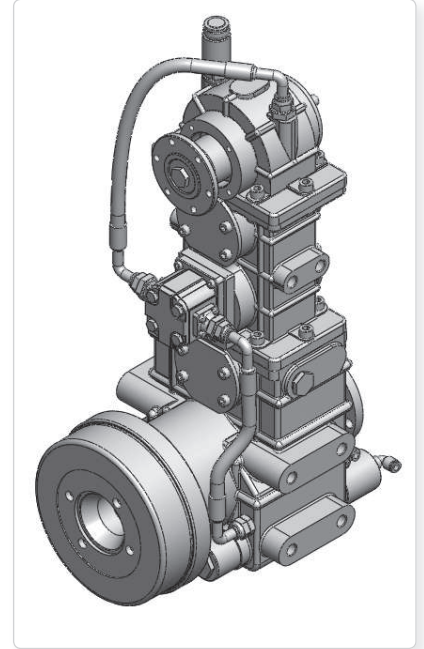
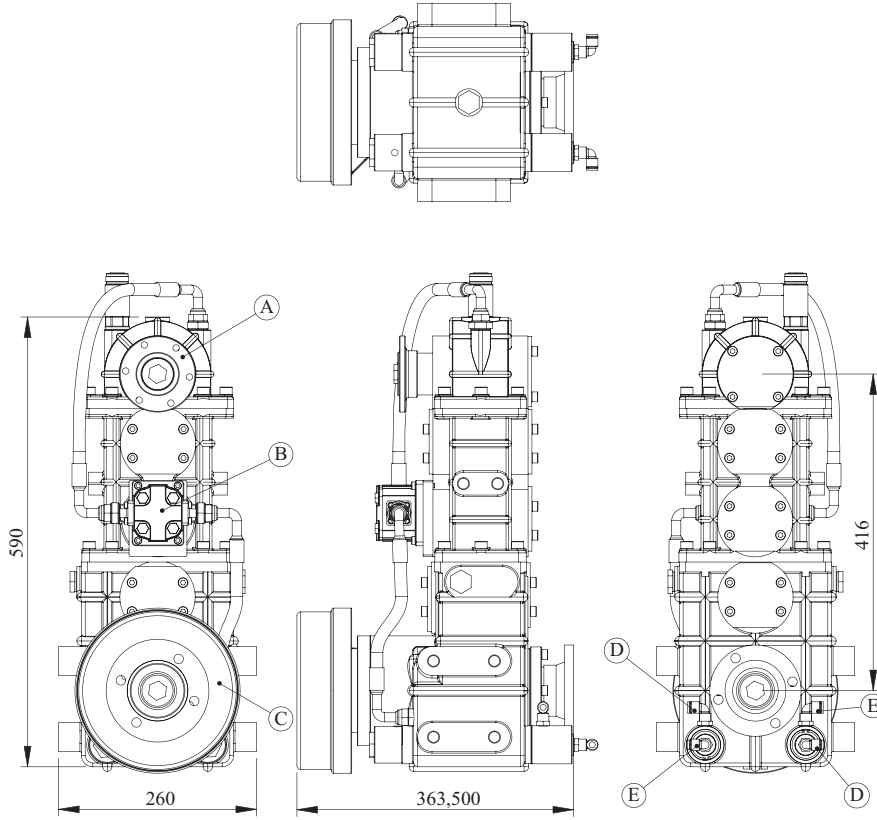
İTFAİYE ARAÇLARI-YOL BAKIM ARAÇLARI  
FOR FIRE FIGHTING VEHICLES-FOR ROAD SERVICE VEHICLES

**Şanzıman Tipi**  
Gearbox Type

Ürün Kodu / Product Code

**UARA.401**

Ürün Görünümleri / Products View



Opsiyonlar / Options

**A :** Flanş, DIN 100 ve DIN 120

**B :** Grup 2 Pompa

**C :** Fren Balata Sistemi (Mitsubishi-Hyundai-İsuzu-Hino)

**D :** Hava Girişi R1/4" (Devreye Alma)

**E :** Hava Girişi R1/4" (Devreden Çıkartma)

**A :** Flange, DIN 100 and DIN 120

**B :** Group 2 Pump

**C :** Hand Brake System (Mitsubishi-Hyundai-Isuzu-Hino)

**D :** Air Inlet R1/4" (Engage)

**E :** Air Inlet R1/4" (Disengage)

Teknik Bilgi / Technical Data

Güç / Power (Kw)	Maksimum Tork / Maximum Torque (Kw)		Çevrim Oranı Ratio	Bağlantı Şekli Mounting Side	Kumanda Kontrol Control Type
	Nm	Kgm			
1000 Dev./Dak.				<b>ŞAFT / SHAFT</b>	<b>HAVALI / PNEUMATIC</b>
82	785	80	1/1.8	Ağırlık / Weight (Kg)	Dönüş Yönü / Rotation Sense
				85	<b>SOL / COUNTERCLOCKWISE (CCW)</b>

# UARA.401





Araç Tipi  
Vehicle Type

İTFAİYE ARAÇLARI - YOL BAKIM ARAÇLARI  
FOR FIRE FIGHTING VEHICLES - FOR ROAD SERVICE VEHICLES

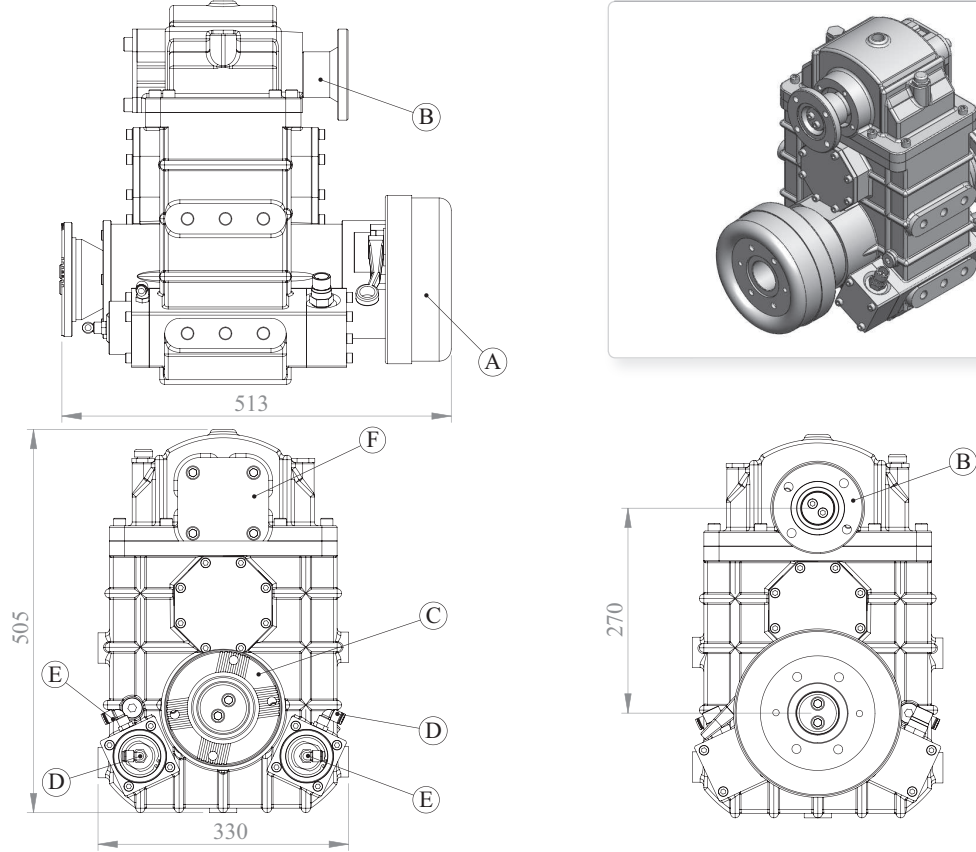
Şanzıman Tipi  
Gearbox Type

Ürün Kodu / Product Code

UARA.801



Ürün Görünümleri / Products View



Opsiyonlar / Options

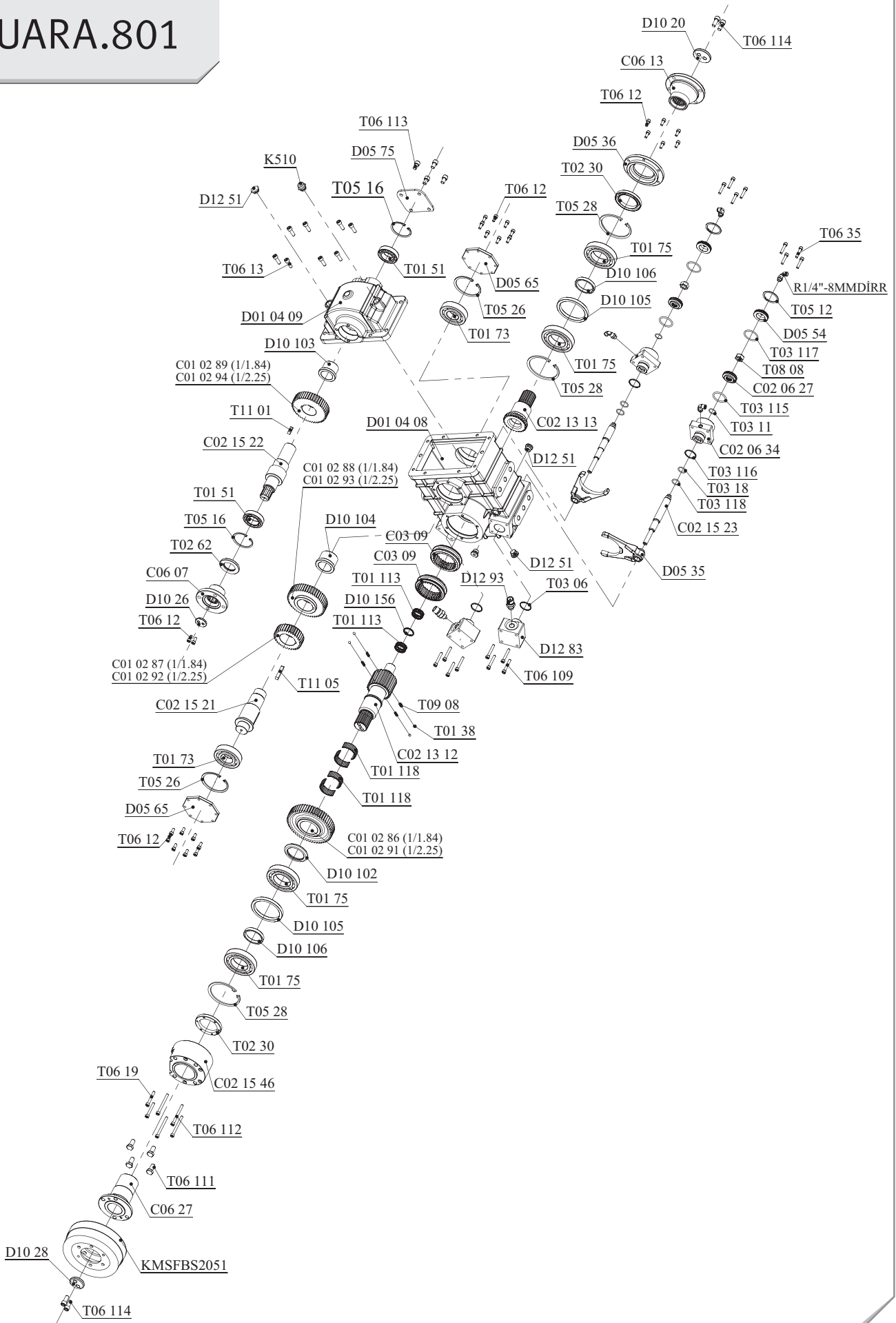
**A:** El Freni Sistemi (İsuzu-Mitsubishi-Hino-Hyundai)  
**B:** DIN 100 (6 Delik) - DIN 120 (4 Delik)  
**C:** DIN 150 (Taramalı)-DIN 180 (Taramalı)-DIN 180  
**D:** Hava Girişi (Devreye Alma)  
**E:** Hava Girişi (Devreden Çıkartma)  
**F:** İkinci Çıkış (Opsiyonel)

**A:** Hand Brake System (Isuzu-Mitsubishi-Hino-Hyundai)  
**B:** DIN 100 (6 Holes) - DIN 120 (4 Holes)  
**C:** DIN 150 (Cross Hatch)-DIN 180 (Cross Hatch)-DIN 180  
**D:** Air Inlet (Engage)  
**E:** Air Inlet (Disengage)  
**F:** Second Output (Options)

Teknik Bilgi / Technical Data

Güç / Power (Kw)	Maksimum Tork / Maximum Torque (Kw)		Çevrim Oranı Ratio	Bağlantı Şekli Mounting Side	Kumanda Kontrol Control Type
	1000 Dev./Dak.	Nm			
UARA.801.1/1.84	135	1275	130	1/1.84	ŞAFT / SHAFT
UARA.801.1/2.25	113	1080	110	1/2.25	HAVALI / PNEUMATIC
				Ağırlık / Weight (Kg)	Dönüş Yönü / Rotation Sense
				128	SOL / COUNTERCLOCKWISE (CCW)

# UARA.801



**Araç Tipi**  
Vehicle Type

4x2 Araçları 4x4'e çevirmek için  
From 4x2 to 4x4

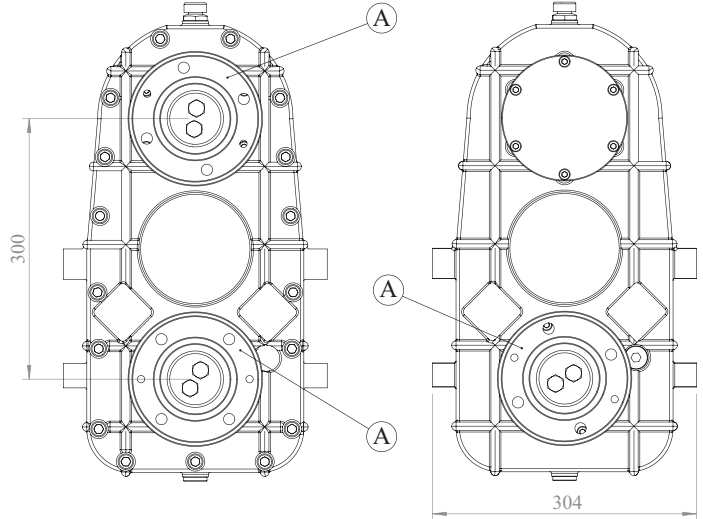
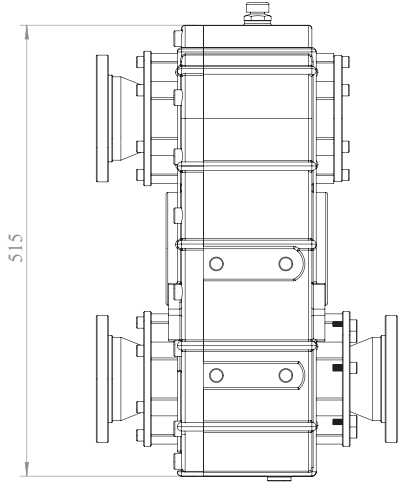
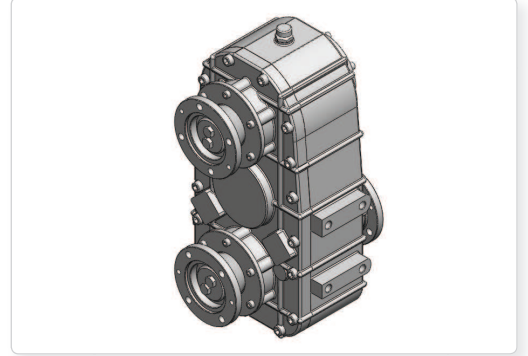
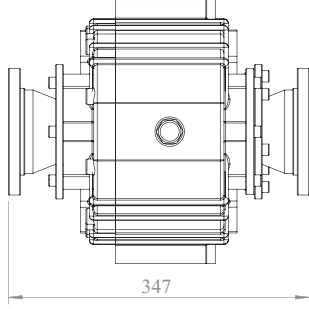
**Şanzıman Tipi**  
Gearbox Type

**Ürün Kodu / Product Code**

**UARA.803**



**Ürün Görünümleri / Products View**



**Opsiyonlar / Options**

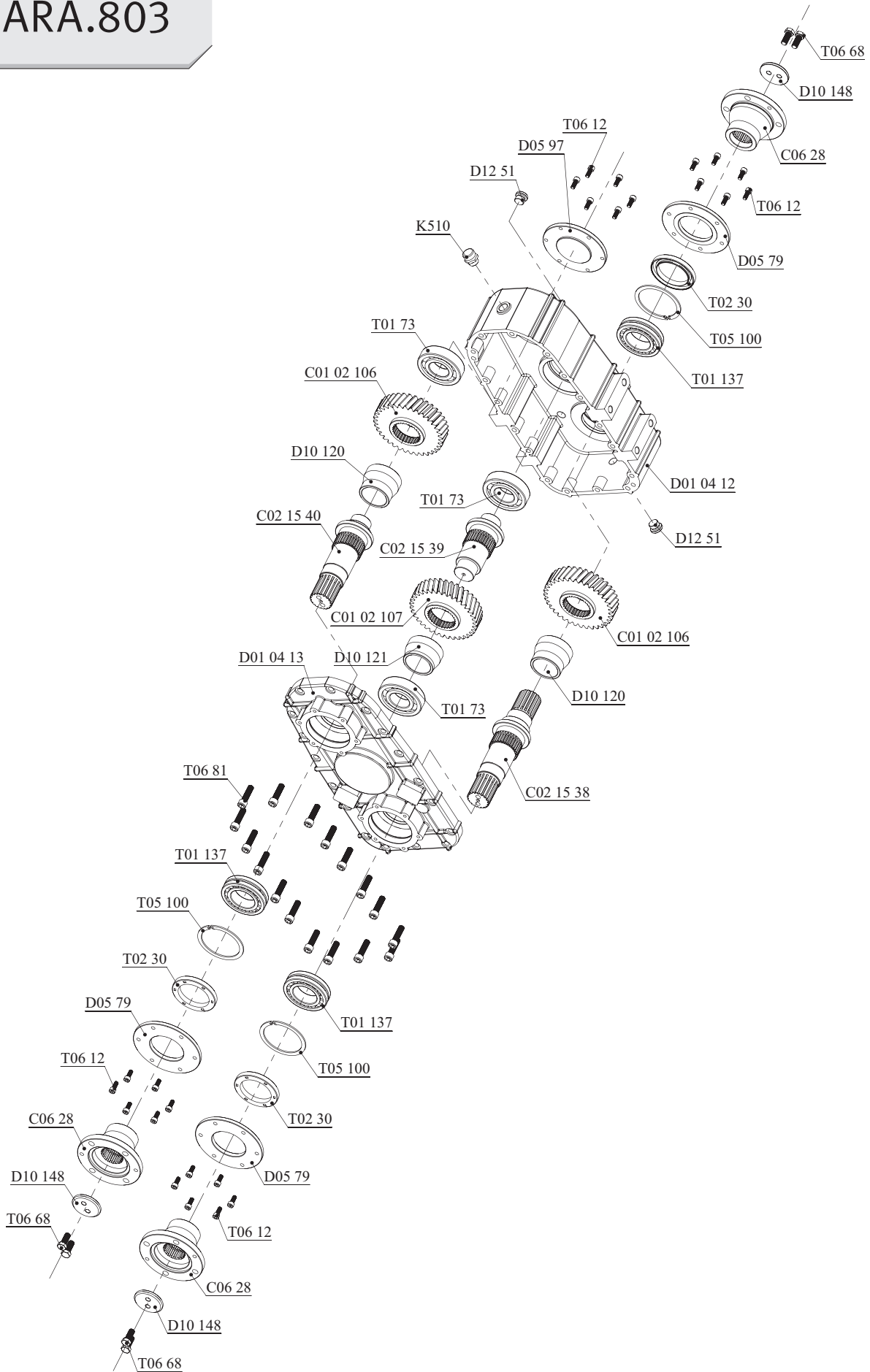
**A :** Flanş DIN 120 - DIN 150 - DIN 180

**A :** Flange DIN 120 - DIN 150 - DIN 180

**Teknik Bilgi / Technical Data**

Güç / Power (Kw)	Maksimum Tork / Maximum Torque (Kw)		Çevrim Oranı Ratio	Bağlantı Şekli Mounting Side	Kumanda Kontrol Control Type
	Nm	Kgm			
1000 Dev./Dak.				<b>ŞAFT / SHAFT</b>	<b>DİREKT / DIRECT</b>
135	1275	130	1/1	Ağırlık / Weight (Kg)	Dönüş Yönü / Rotation Sense
				92	<b>SOL / COUNTERCLOCKWISE (CCW)</b>

# UARA.803



Araç Tipi  
Vehicle Type

İTFAİYE ARAÇLARI-YOL BAKIM ARAÇLARI  
FOR FIRE FIGHTING VEHICLES-FOR ROAD SERVICE VEHICLES

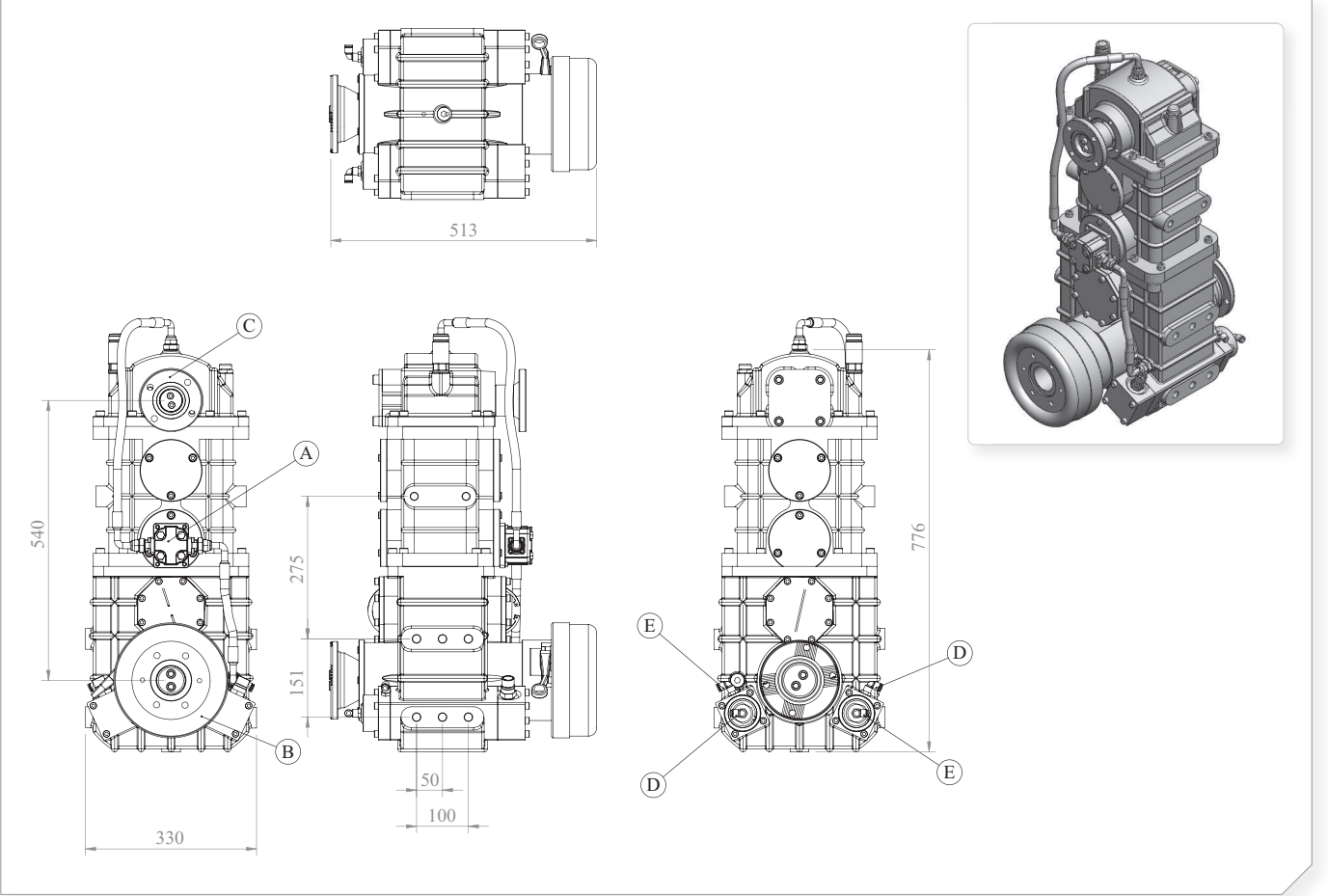
Şanzıman Tipi  
Gearbox Type

Ürün Kodu / Product Code

UARA.805



Ürün Görünümleri / Products View



Opsiyonlar / Options

<b>A :</b> Dişli Pompa	<b>A :</b> Gear Pump
<b>B :</b> Fren Balata Sistemi (Mitsubishi-Hyundai-İsuzu-Hino)	<b>B :</b> Hand Brake System (Mitsubishi-Hyundai-Isuzu-Hino)
<b>C :</b> Flanş, DIN 100 ve DIN 120	<b>C :</b> Flange, DIN 100 and DIN 120
<b>D :</b> Hava Girişi R1/4" (Devreye Alma)	<b>D :</b> Air Inlet R1/4" (Engage)
<b>E :</b> Hava Girişi R1/4" (Devreden Çıkartma)	<b>E :</b> Air Inlet R1/4" (Disengage)

Teknik Bilgi / Technical Data

Güç / Power (Kw)	Maksimum Tork / Maximum Torque (Kw)		Çevrim Oranı Ratio	Bağlantı Şekli Mounting Side	Kumanda Kontrol Control Type
	Nm	Kgm			
1000 Dev./Dak.					
135	1275	130	1/1.84	ŞAFT / SHAFT	HAVALI / PNEUMATIC
				Ağırlık / Weight (Kg)	Dönüş Yönü / Rotation Sense
				200	SOL / COUNTERCLOCKWISE (CCW)

# UARA.805



Araç Tipi  
Vehicle Type

İTFAİYE ARAÇLARI-YOL BAKIM ARAÇLARI  
FOR FIRE FIGHTING VEHICLES-FOR ROAD SERVICE VEHICLES

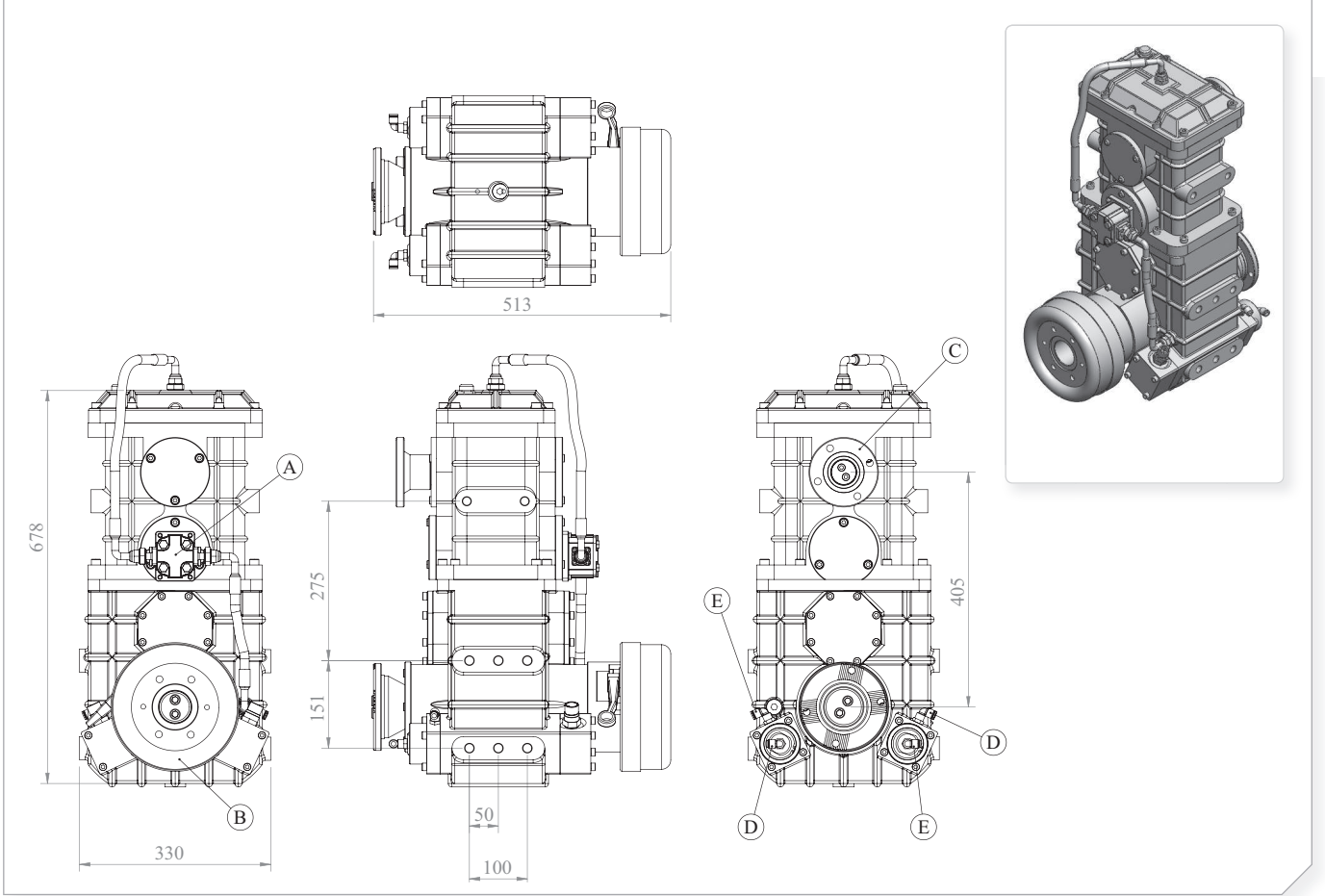
Şanzıman Tipi  
Gearbox Type

Ürün Kodu / Product Code

UARA.806



Ürün Görünümleri / Products View



Opsiyonlar / Options

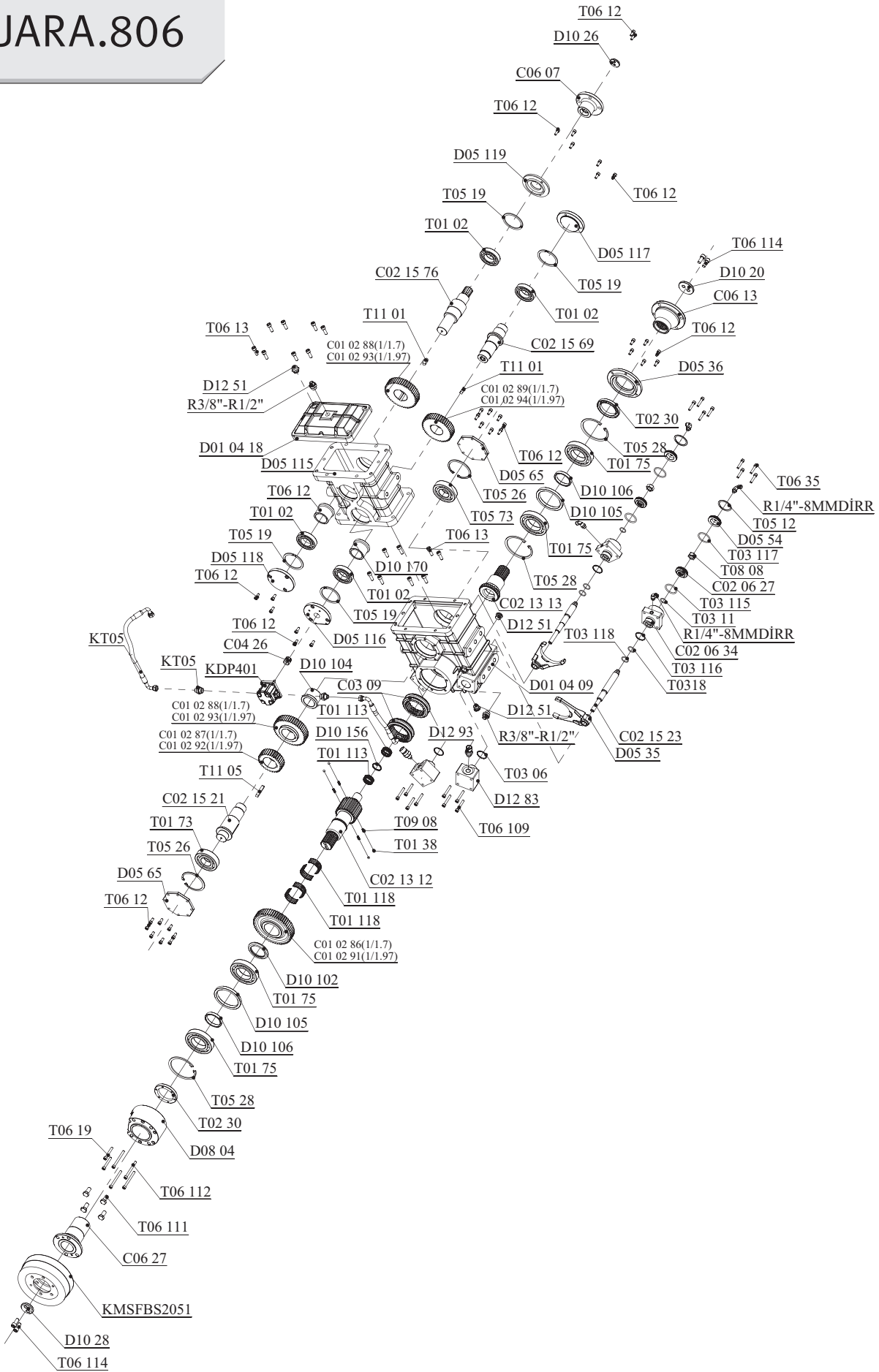
- A :** Dişli Pompa  
**B :** Fren Balata Sistemi (Mitsubishi-Hyundai-İsuzu-Hino)  
**C :** Flanş, DIN 100 ve DIN 120  
**D :** Hava Girişi R1/4" (Devreye Alma)  
**E :** Hava Girişi R1/4" (Devreden Çıkartma)

- A :** Gear Pump  
**B :** Hand Brake System (Mitsubishi-Hyundai-Isuzu-Hino)  
**C :** Flange, DIN 100 and DIN 120  
**D :** Air Inlet R1/4" (Engage)  
**E :** Air Inlet R1/4" (Disengage)

Teknik Bilgi / Technical Data

Güç / Power (Kw)	Maksimum Tork / Maximum Torque (Kw)		Çevrim Oranı Ratio	Bağlantı Şekli Mounting Side	Kumanda Kontrol Control Type
	Nm	Kgm			
1000 Dev./Dak.					
135	1275	130	1/1.7	ŞAFT / SHAFT	HAVALI / PNEUMATIC
				Ağırlık / Weight (Kg)	Dönüş Yönü / Rotation Sense
				176	SOL / COUNTERCLOCKWISE (CCW)

# UARA.806





Araç Tipi  
Vehicle Type

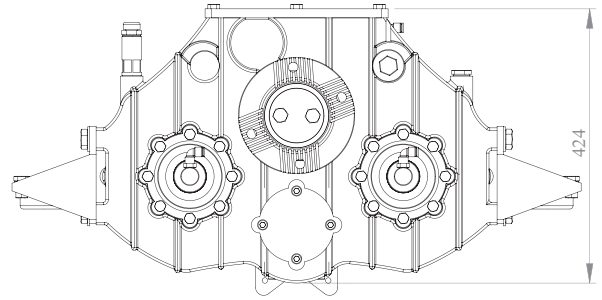
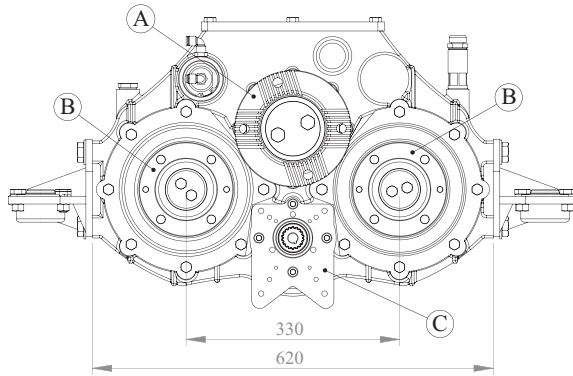
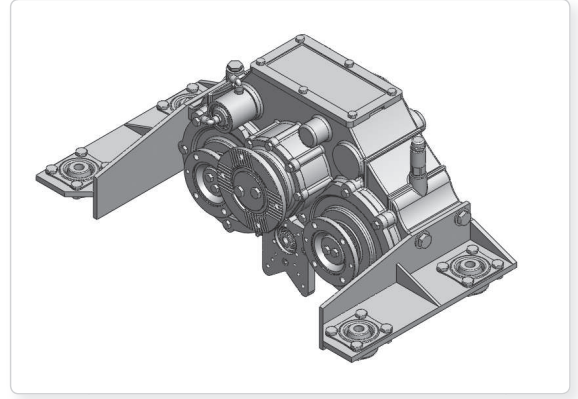
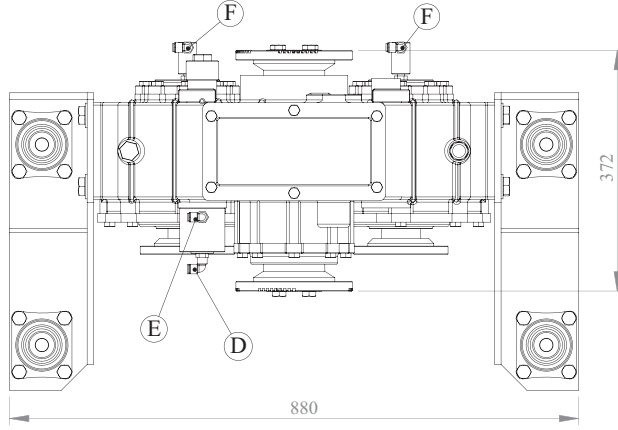
**VİDANJÖR VE KOMBİNE KANAL AÇMA ARAÇLARI**  
USAGE FOR CESSPIT EMTIERS, FOR CLEANING COMBINATION MACHINES

Ürün Kodu / Product Code

**UARA.2400**

Şanzıman Tipi  
Gearbox Type

Ürün Görünümleri / Products View



Opsiyonlar / Options

**A :** DIN 150 (4 D. Taramalı), DIN180 (4 D. Taramalı),  
DIN180 (8 D.)  
**B :** DIN140 (4 Delikli Taramasız)  
**C :** Pompa Çıkışı: 1P1, 2P1, Dişli Pompa  
**D :** Hava Girişi R1/4" (Differansiyel Çıkışı Devrede)  
**E :** Hava Girişi R1/4" (Differansiyel Çıkışı Devre Dışı)  
**F :** Hava Girişi R1/4" (Yan Çıkışlar Devrede)

**A :** DIN 150(4 H. Cross Hatching), DIN180(4 H. Cross Hatching),  
DIN180(8 H)  
**B :** DIN140 (4 Holes)  
**C :** Pump Output: 1P1, 2P1, Gear Pump  
**D :** Air Inlet R1/4" (Rear Axle Output Engage)  
**E :** Air Inlet R1/4" (Rear Axle Output Disengage)  
**F :** Air Inlet R1/4" (Outputs Engage)

Teknik Bilgi / Technical Data

Güç / Power (Kw)	Maksimum Tork / Maximum Torque (Kw)		Çevrim Oranı Ratio	Bağlantı Şekli Mounting Side	Kumanda Kontrol Control Type
	Nm	Kgm			
1000 Dev./Dak.					
115	1080	110	1/1.25	<b>ŞAFT / SHAFT</b>	<b>HAVALI / PNEUMATIC</b>
				Ağırlık / Weight (Kg)	Dönüş Yönü / Rotation Sense
				195	<b>SAĞ / CLOCKWISE (CW)</b>

# UARA.2400



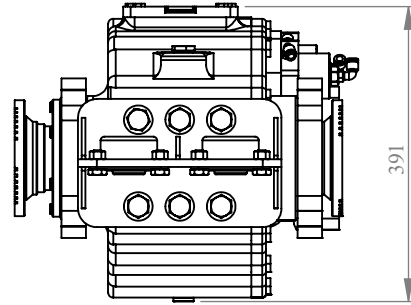
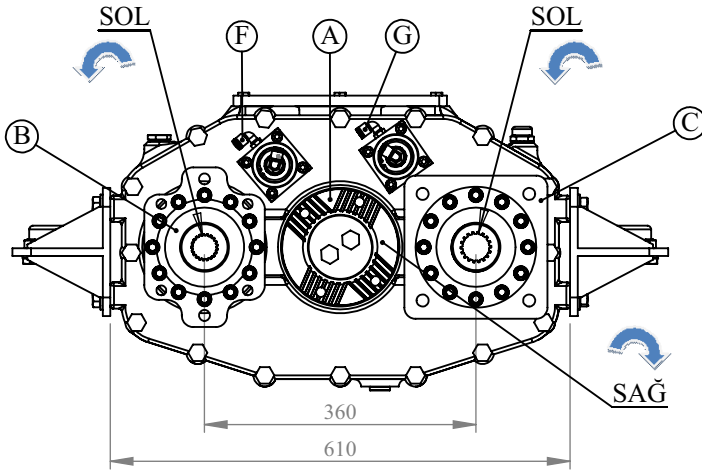
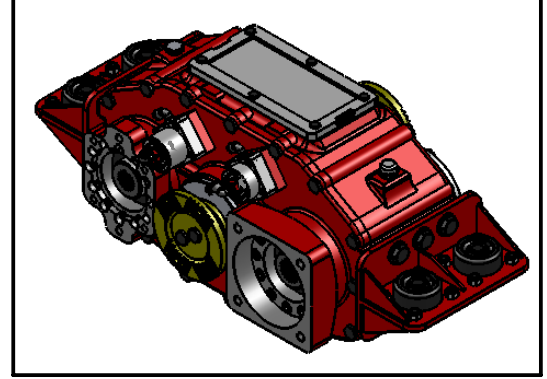
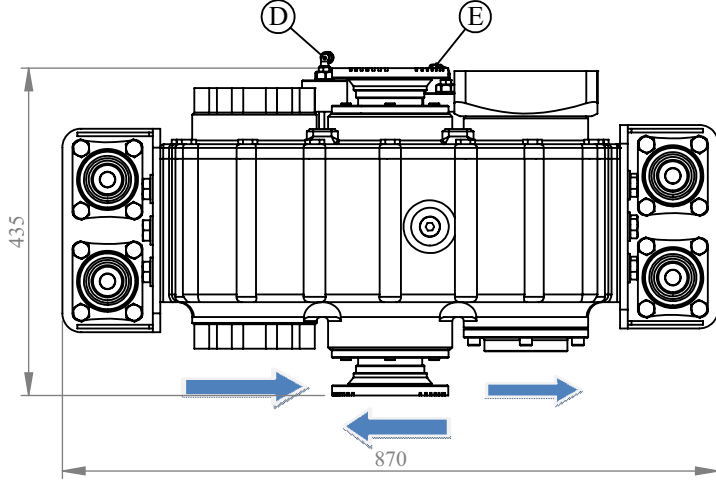
Araç Tipi / Vehicle Type: SÜPÜRGE VE YOL BAKIM ARAÇLARI  
SEWAGE AND ROAD MAINTAINS TRUCKS

Ürün Kodu / Product Code:

Şanzıman Tipi / Gearbox Type:

**UARA.2500**

### ÜRÜN GÖRÜNÜMLERİ / PRODUCTS VIEW



### OPSİYONLAR / OPTIONS

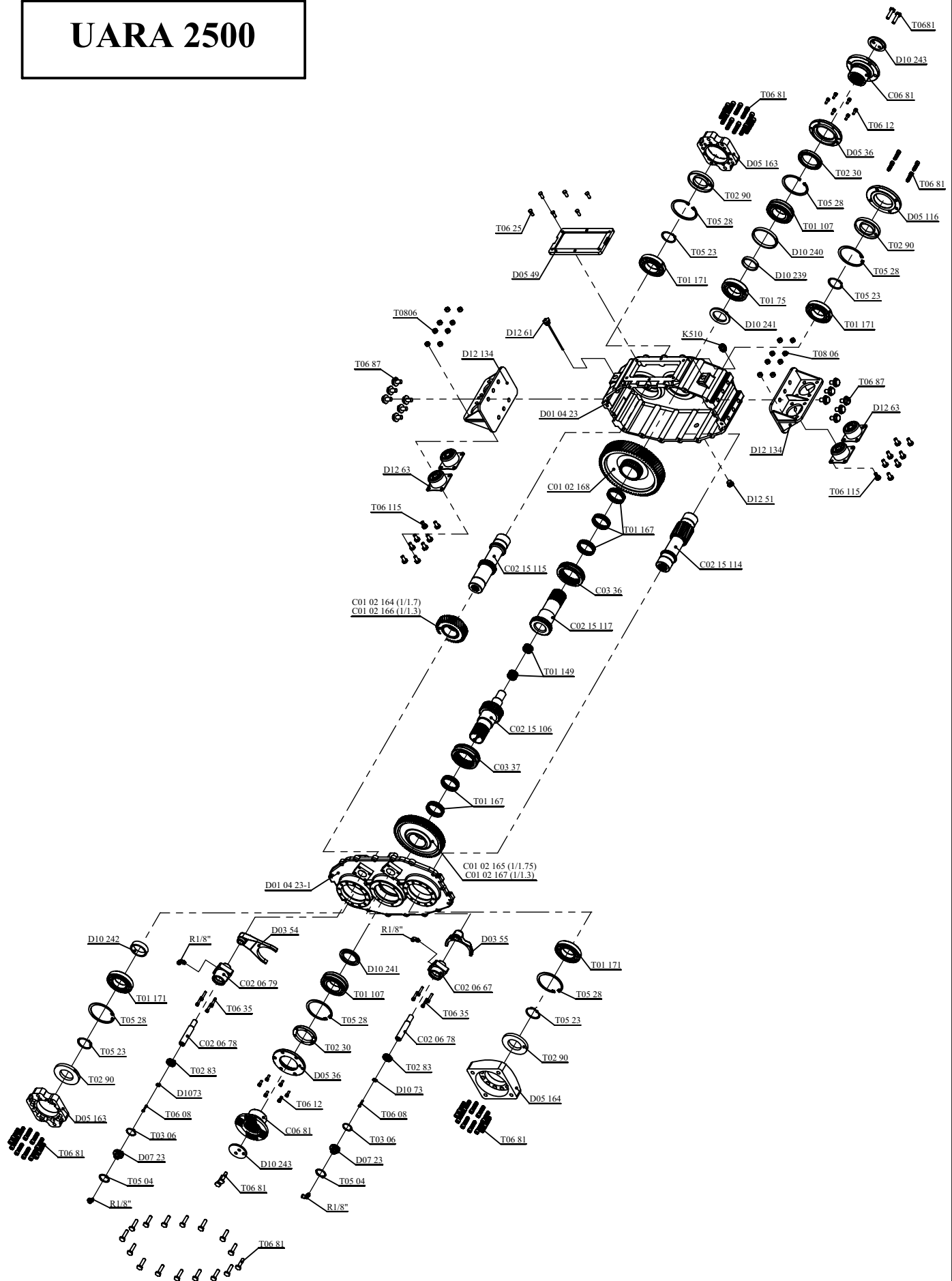
A :DIN 150 (4 DELİK TARAMALI) KAPLIN  
B :SH6V 75 POMPA PLEYTİ  
C :H1C 108ME HİDROMOTOR PLEYTİ  
D :HAVA GİRİŞİ (HİDROLİK POMPA DEVRE DIŞI)  
E :HAVA GİRİŞİ (HİDROMOTOR DEVRE DIŞI)  
F :HAVA GİRİŞİ (HİDROLİK POMPA DEVREDE)  
G:HAVA GİRİŞİ (HİDROMOTOR DEVREDE)

A : DIN 150 (4 H. CROSS HATCHING) FLANGE  
B : SH6V 75 PUMP PLATE  
C :H1C 108ME HYDROMOTOR PLATE  
D :AIR INLET(HYDROLIC PUMP DISENGAGE)  
E :AIR INLET (HYDROMOTOR DISENGAGE)  
F :AIR INLET (HYDROLIC PUMP ENGAGE)  
G:AIR INLET (HYDROMOTOR ENGAGE)

### TEKNİK BİLGİ / TECHNICAL DATA

Güç (Kw) (Power) 1000 Dev./Dak.	Maksimum Tork (Max. Torque) Nm	Çevrim Oranı (Ratio) Kgm	Bağlantı Şekli (Mounting Side)	Kumanda Kontrol (Control Type)	
150	1432.5	146	GİRİŞ:1/1.3	HAVALI / PNEUMATIC	
			GİRİŞ:1/1.75		Dönüş Yönü (Rotation Sense)
			ÇIKIŞ:1/4.5		SAĞ / CLOCKWISE (CW)
			ŞAFT / SHAFT		
			Ağırlık (Kg) (Weight)		
			200		

# UARA 2500

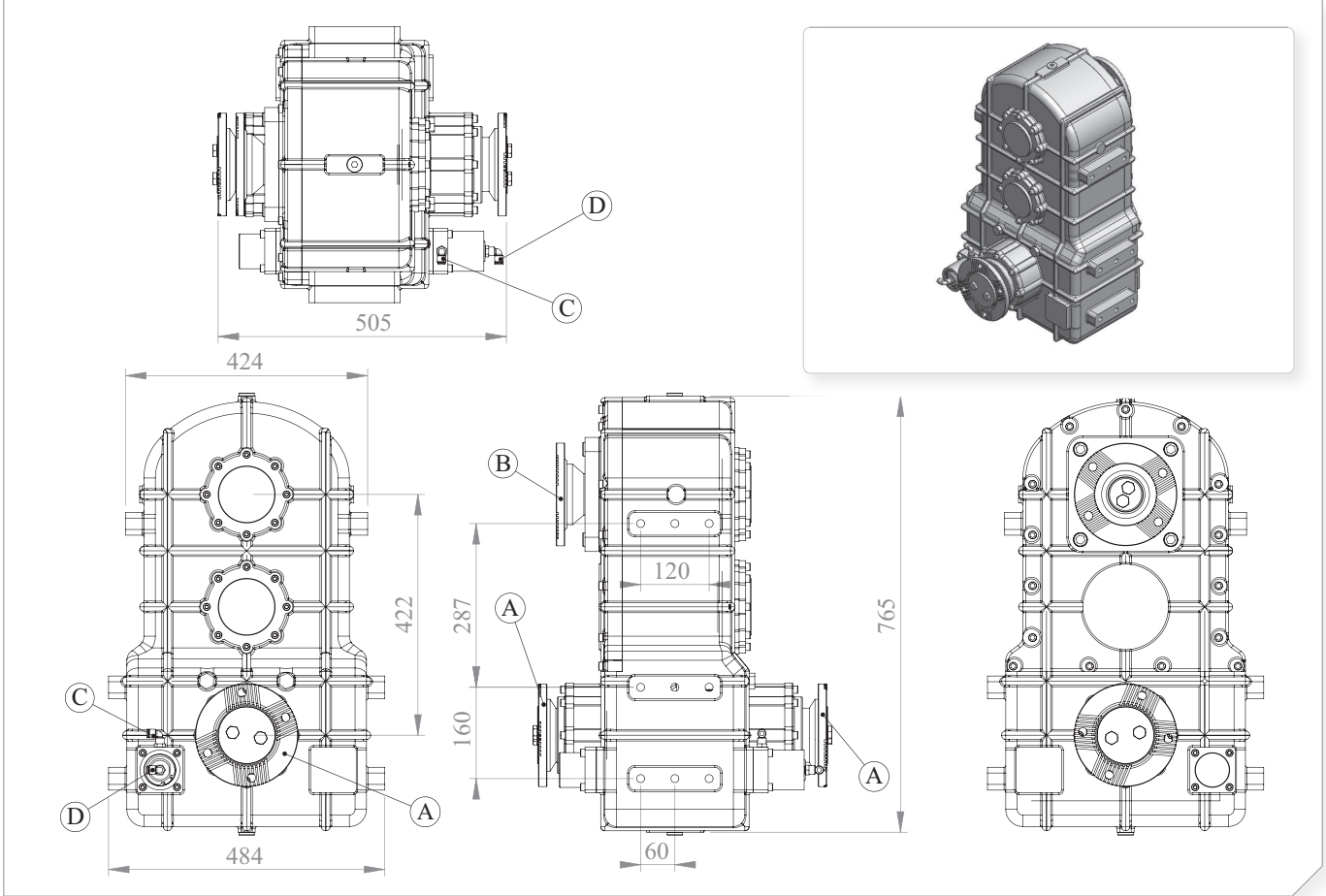


<b>Araç Tipi</b> Vehicle Type	<b>YÜKSEK DEBİLİ VE YÜKSEK BASINÇLI VİDANJÖR VE KOMBİNE KANAL AÇMA ARAÇLARI</b> USAGE FOR CESSPIT EMTIERS, FOR HIGH FLOW AND HIGH PRESSURE CLEANING COMBINATION MACHINES
<b>Şanzıman Tipi</b> Gearbox Type	

Ürün Kodu / Product Code

**UARA.3000**

Ürün Görünümleri / Products View



Opsiyonlar / Options

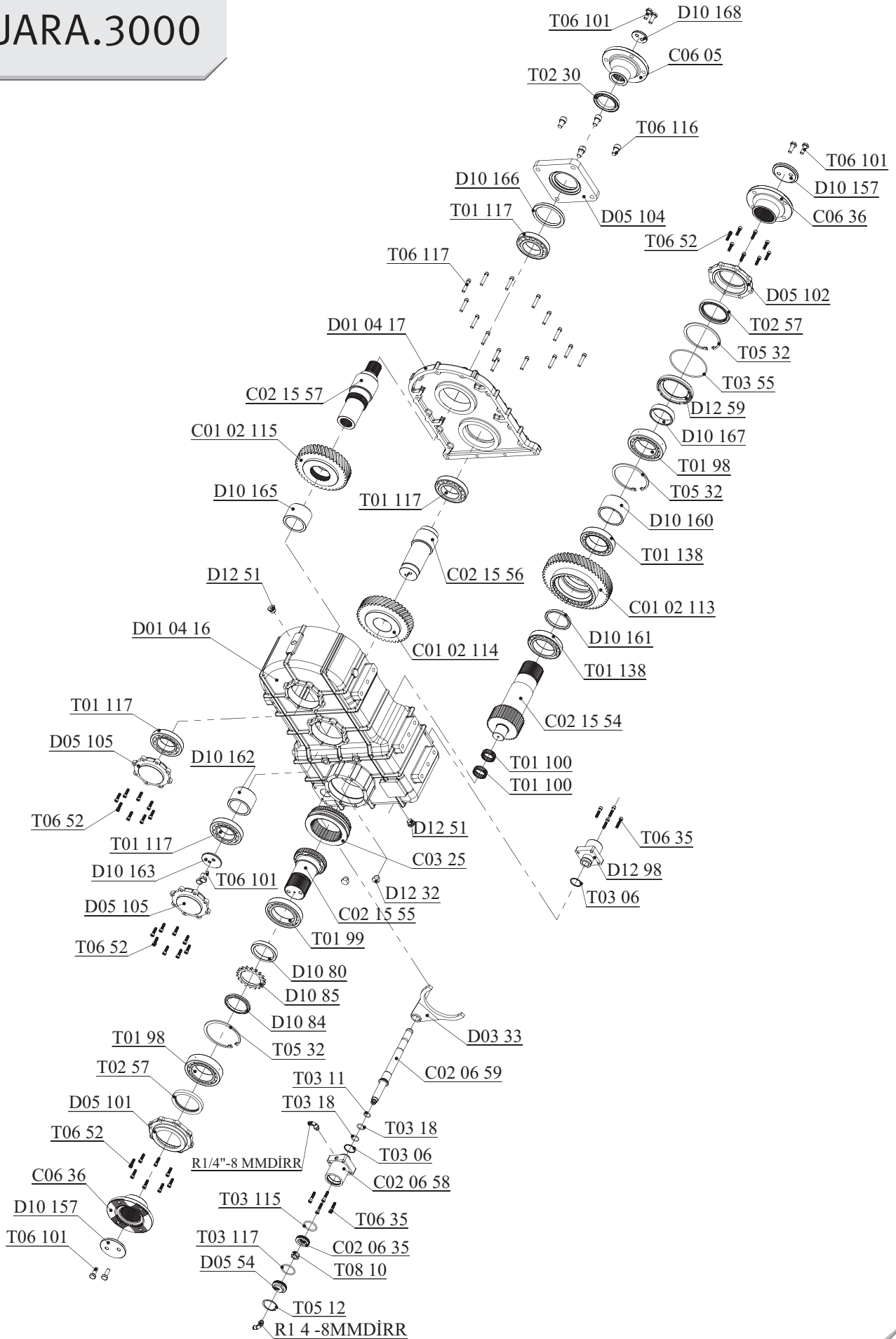
- A :** DIN 150 (4 D. Taramalı), DIN180 (4 D. Taramalı), DIN180 (8 D.)  
**B :** DIN150 (4 Delikli Taramalı), DIN180 (4 Delikli Taramalı)  
**C :** Hava Girişi R1/4" (Devrede)  
**D :** Hava Girişi R1/4" (Devre Dışı)

- A :** DIN 150(4 H. Cross Hatching),DIN180(4 H. Cross Hatching),DIN180(8 H)B :  
**B :** DIN150 (4 Holes Cross Hatching), DIN180 (4 Holes Cross Hatching)  
**C :** Air Inlet R1/4" (Engage)  
**D :** Air Inlet R1/4" (Disengage)

Teknik Bilgi / Technical Data

Güç / Power (Kw)	Maksimum Tork / Maximum Torque (Kw)		Çevrim Oranı Ratio	Bağlantı Şekli Mounting Side	Kumanda Kontrol Control Type
	Nm	Kgm			
1000 Dev./Dak.					
210	1960	200	1/1.3	<b>ŞAFT / SHAFT</b>	<b>HAVALI / PNEUMATIC</b>
				<b>Ağırlık / Weight (Kg)</b>	<b>Dönüş Yönü / Rotation Sense</b>
				250	<b>SOL / COUNTERCLOCKWISE (CCW)</b>

# UARA.3000



Araç Tipi  
Vehicle Type

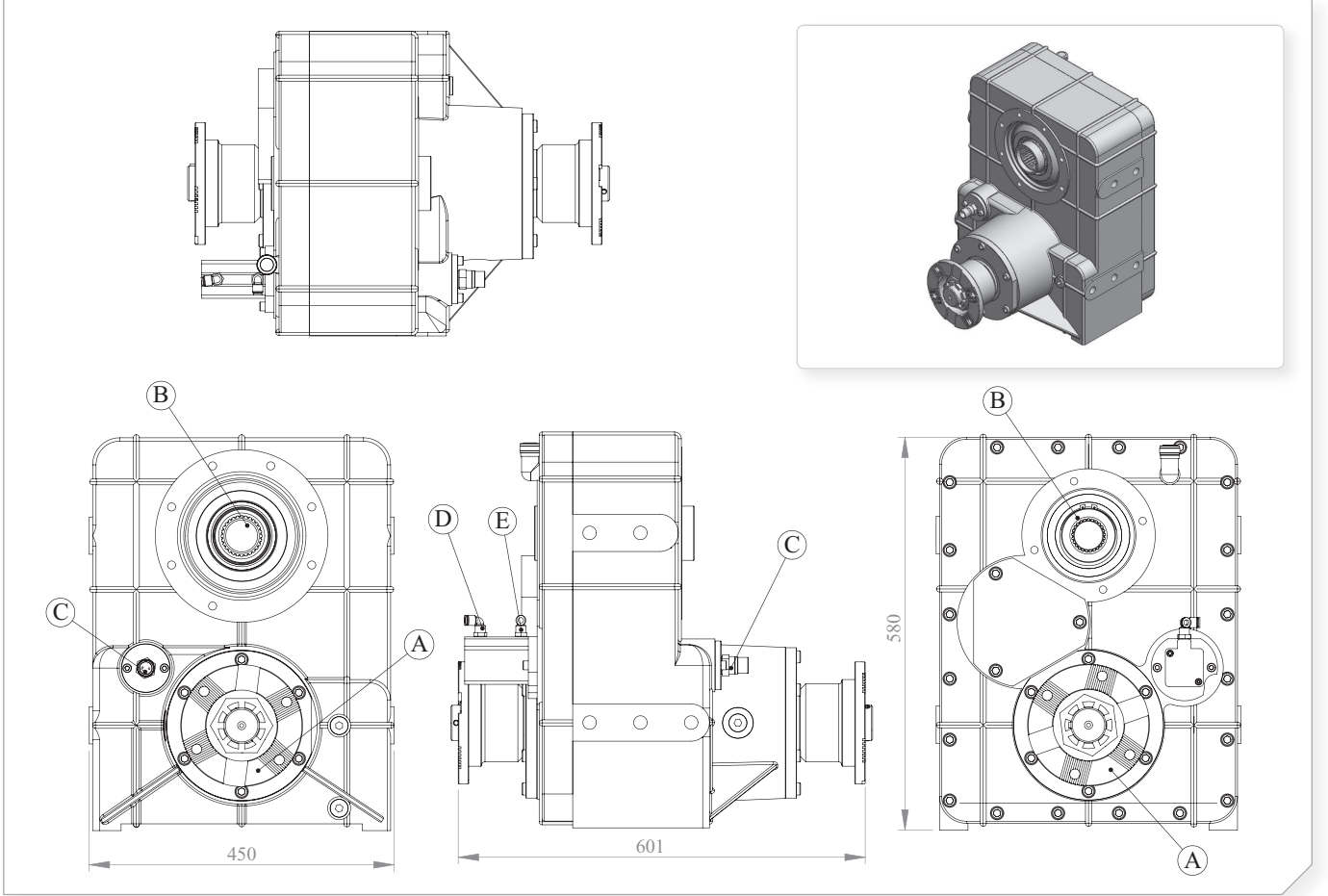
**BETON POMPASI ARAÇLARI İÇİN**  
FOR CONCRETE PUMP VEHICLES

Şanzıman Tipi  
Gearbox Type

Ürün Kodu / Product Code

**UARA.3001**

Ürün Görünümleri / Products View



Opsiyonlar / Options

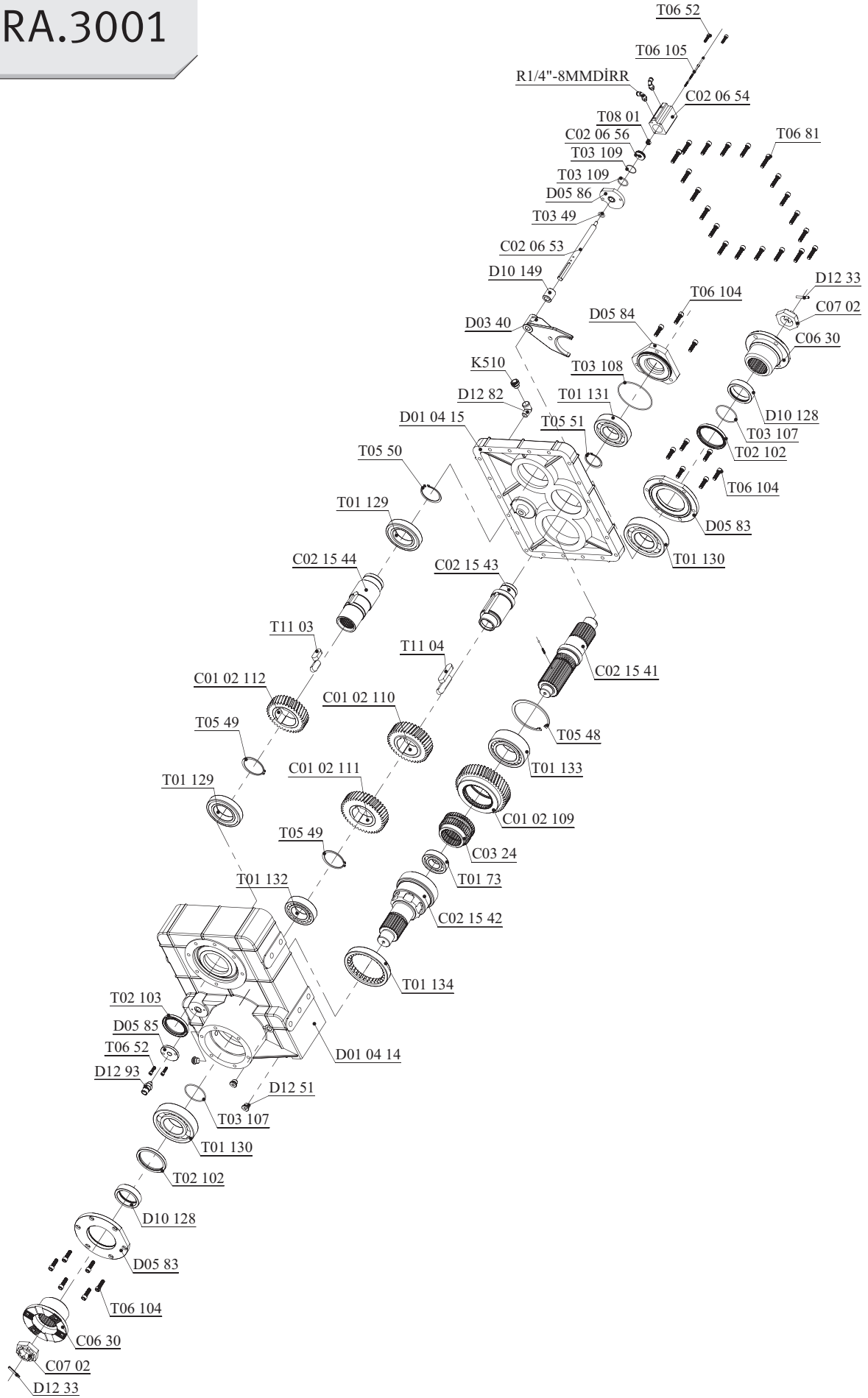
- A :** Flanş DIN 180 (4 Delikli, Taramalı)  
**B :** Çıkış, Pompa Bağlantısı  
**C :** Elektrik Müşürü  
**D :** Hava Girişi R1/4" (Devrede)  
**E :** Hava Girişi R1/4" (Devre dışı)

- A :** Flange DIN 180 (4 Holes, Cross Hatching)  
**B :** Outputs  
**C :** Passing Contact Switch  
**D :** Air Inlet R1/4" (Engage)  
**E :** Air Inlet R1/4" (Disengage)

Teknik Bilgi / Technical Data

Güç / Power (Kw)	Maksimum Tork / Maximum Torque (Kw)		Çevrim Oranı Ratio	Bağlantı Şekli Mounting Side	Kumanda Kontrol Control Type
	Nm	Kgm			
1000 Dev./Dak.					
190	1765	180	1/1.46	ŞAFT / SHAFT	HAVALI / PNEUMATIC
				Ağırlık / Weight (Kg)	Dönüş Yönü / Rotation Sense
				150	SOL / COUNTERCLOCKWISE (CCW)

# UARA.3001



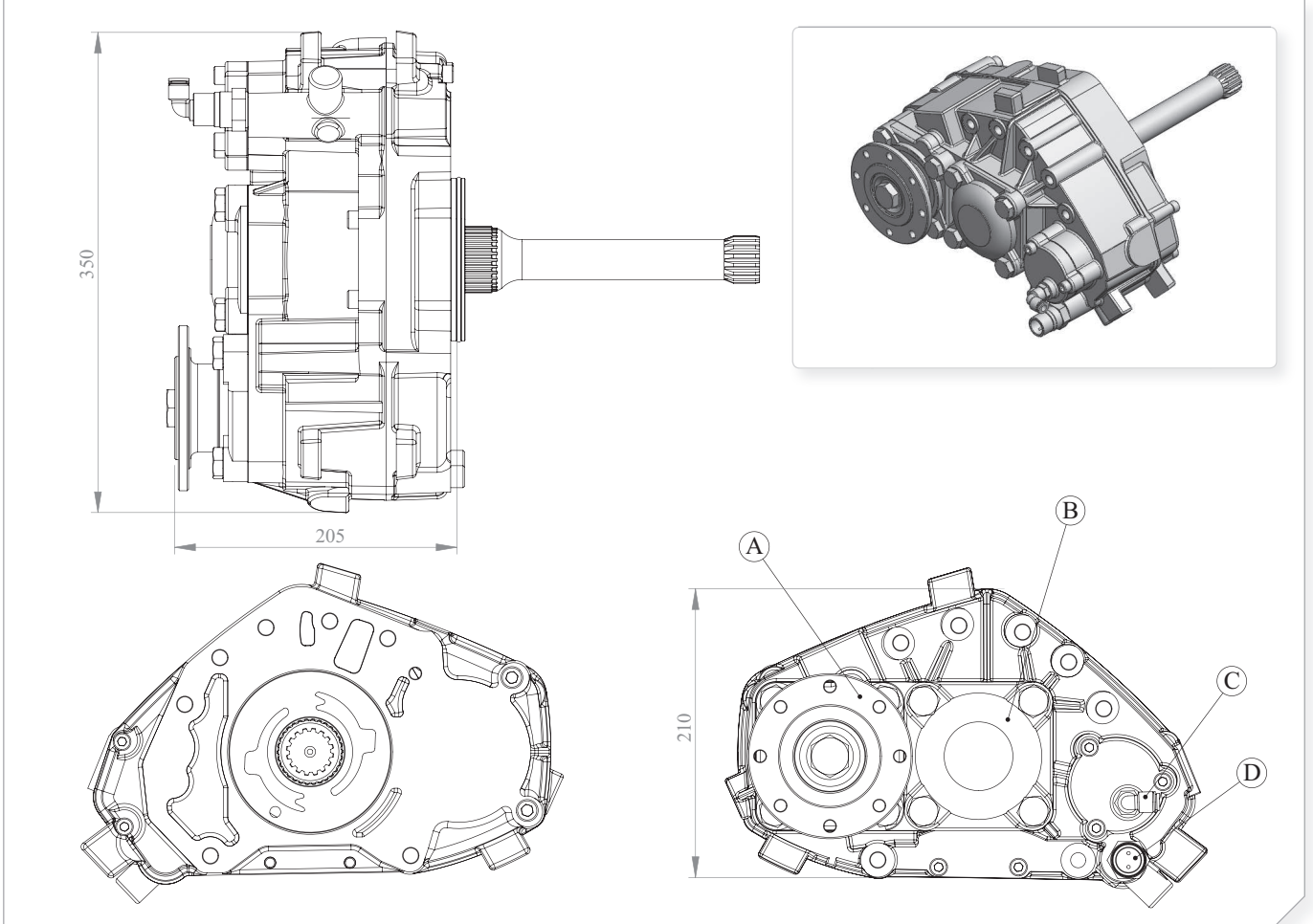


<b>Araç Tipi</b> Vehicle Type	MERCEDES AXOR-ACTROSS FOR FIRE FIGHTING, FOR CESSPIT EMPTIERS VEHICLES, FOR CONCRETE PUMPS
<b>Şanzıman Tipi</b> Gearbox Type	G210-16 / G240-16 / 131 / 230 / 240

Ürün Kodu / Product Code

**MB.6.240**

Ürün Görünümleri / Products View



Opsiyonlar / Options

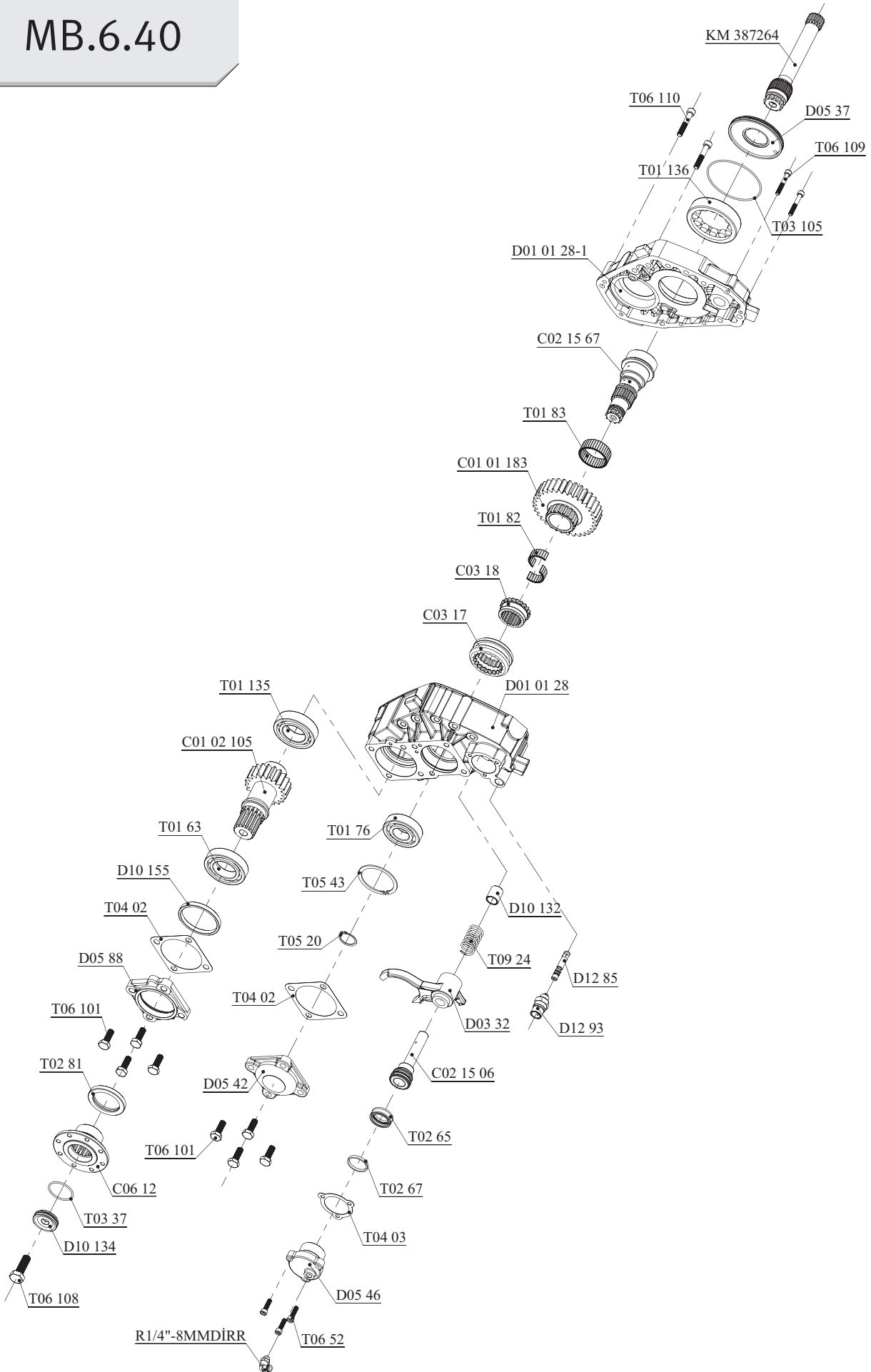
- A :** PTO çıkışı (DIN 120 flange) - (DIN 100)  
**B :** İkinci P.T.O. Bağlantısı (Opsiyonel) Uni 3 delik ve ISO 4 delik PTO bağlantılıya uygun  
**C :** Hava Girişi R1/4"  
**D :** Elektrik Müşürü

- A :** PTO output (DIN 120 flange) - (DIN 100)  
**B :** Second Output (Optional) Uni 3 bolt and ISO 4 bolt mtg. PTO  
**C :** Air Inlet R1/4"  
**D :** Passing Contact Switches

Teknik Bilgi / Technical Data

Güç / Power (Kw)	Maksimum Tork / Maximum Torque (Kw)		Çevrim Oranı Ratio	Bağlantı Şekli Mounting Side	Kumanda Kontrol Control Type
	Nm	Kgm			
1000 Dev./Dak.				<b>KUYRUK / REAR</b>	<b>HAVALI / PNEUMATIC</b>
88	840	85.5	1/1.65	Ağırlık / Weight (Kg) 27	Dönüş Yönü / Rotation Sense <b>SOL / COUNTERCLOCKWISE (CCW)</b>

# MB.6.40

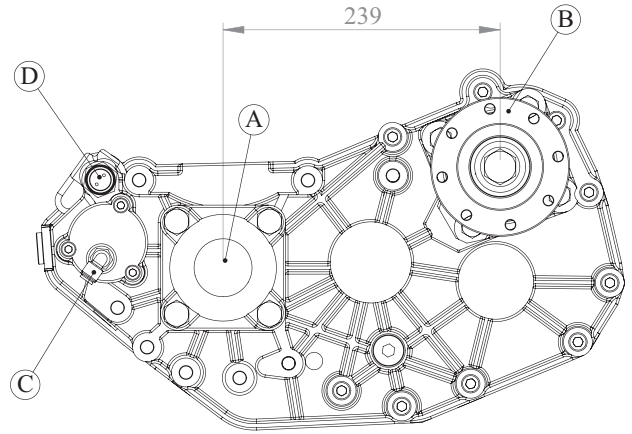
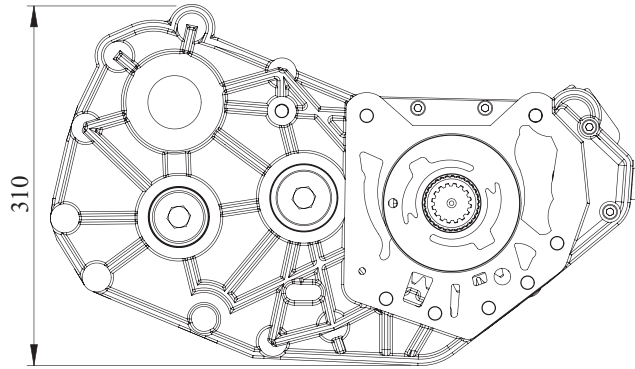
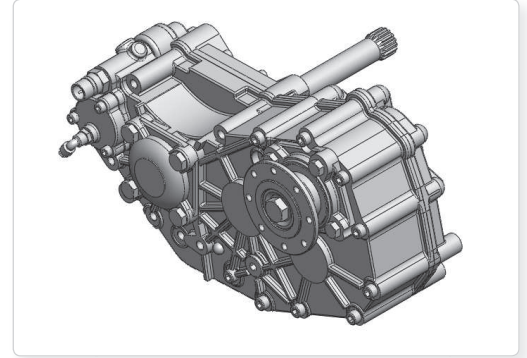
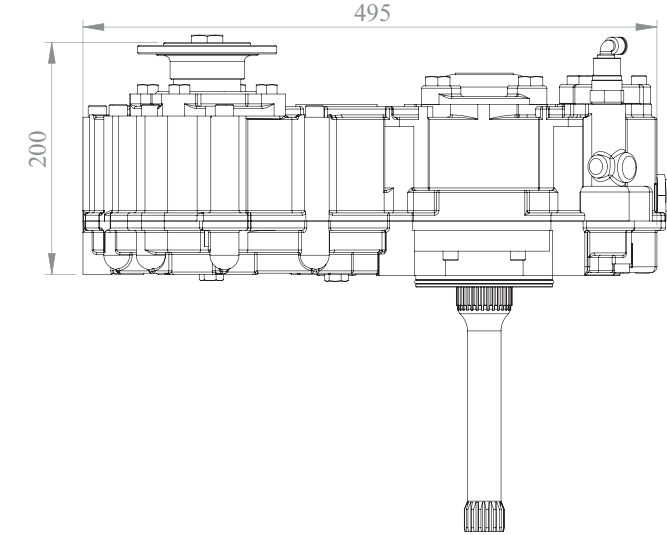


<b>Araç Tipi</b> Vehicle Type	MERCEDES AXOR-ACTROSS FOR FIRE FIGHTING, FOR CESSPIT EMPTIERS VEHICLES
<b>Şanzıman Tipi</b> Gearbox Type	G210, 211, 240, 260-16(17.03-11.7-9.75) G221-9 (16.02) G131-9

Ürün Kodu / Product Code

**MB.8.211**

Ürün Görünümleri / Products View



Opsiyonlar / Options

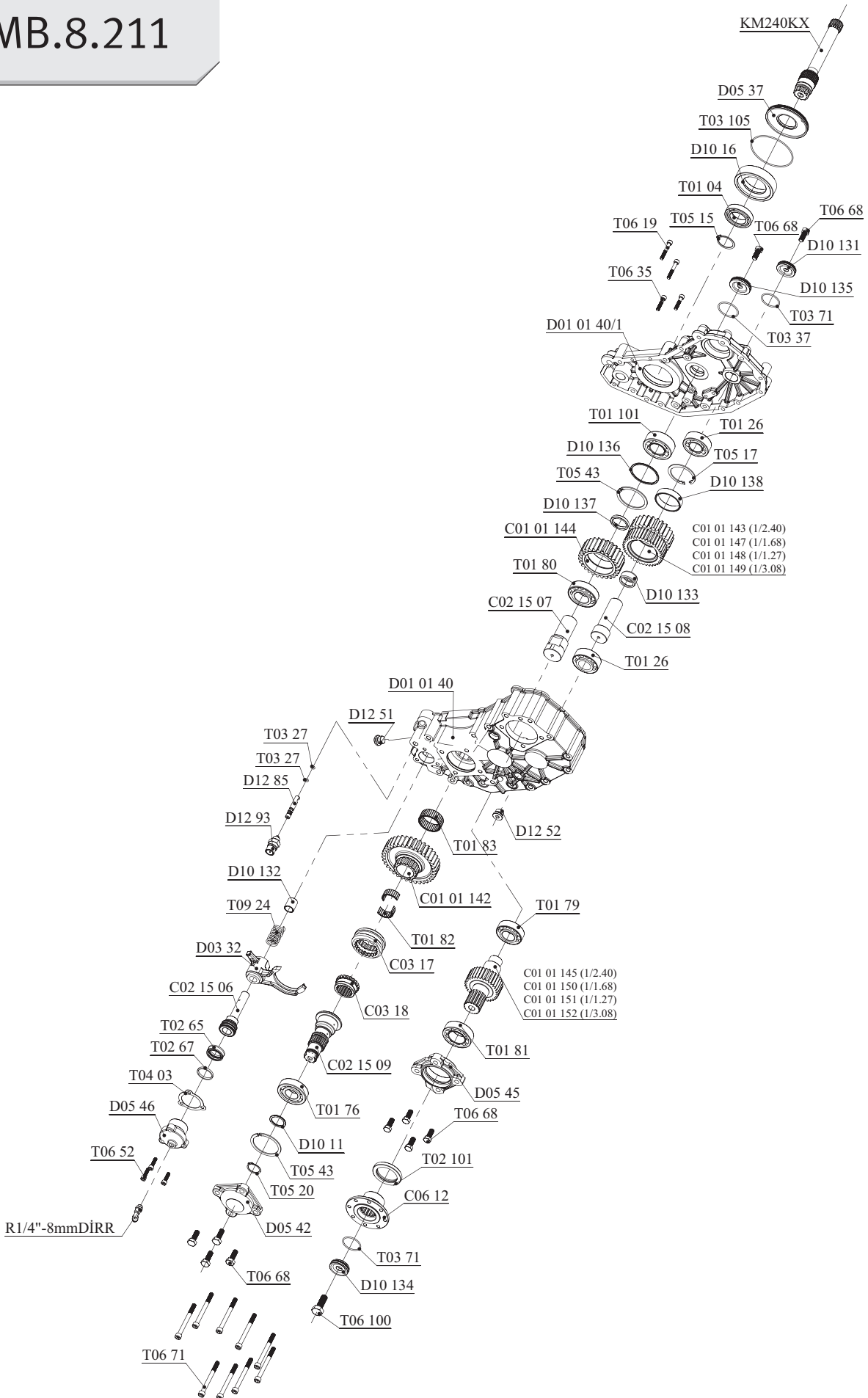
- A:** İkinci P.T.O. Bağlantısı (Opsiyonel) Uni 3 delik ve ISO 4 delik PTO bağlantıya uygun  
**B:** Flanş, DIN 120-DIN 100  
**C:** Hava Girişi R1/4"  
**D:** Elektrik Müşürü

- A:** Second Output (Options) Uni 3 bolt and ISO 4 bolt mtg. PTO  
**B:** Flange, DIN 120-DIN 100  
**C:** Air Inlet R1/4"  
**D:** Passing Contact Switches

Teknik Bilgi / Technical Data

Güç / Power (Kw)	Maksimum Tork / Maximum Torque (Kw)		Çevrim Oranı Ratio	Bağlantı Şekli Mounting Side	Kumanda Kontrol Control Type
	Nm	Kgm			
1000 Dev./Dak.					
133.6	1276	130	1/1.27	<b>KUYRUK / REAR</b>	<b>HAVALI / PNEUMATIC</b>
102.8	982	100	1/1.68		
82.2	785	80	1/2.4		
61.7	589	60	1/3.08		
				<b>Ağırlık / Weight (Kg)</b>	<b>Dönüş Yönü / Rotation Sense</b>
				40	<b>SOL / COUNTERCLOCKWISE (CCW)</b>

# MB.8.211



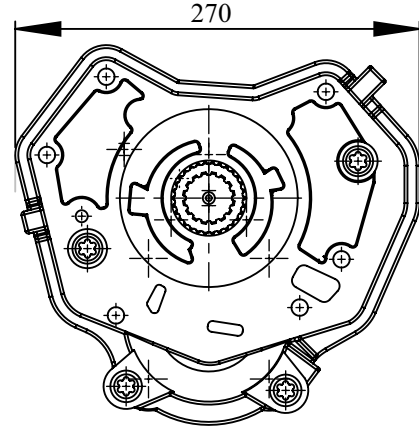
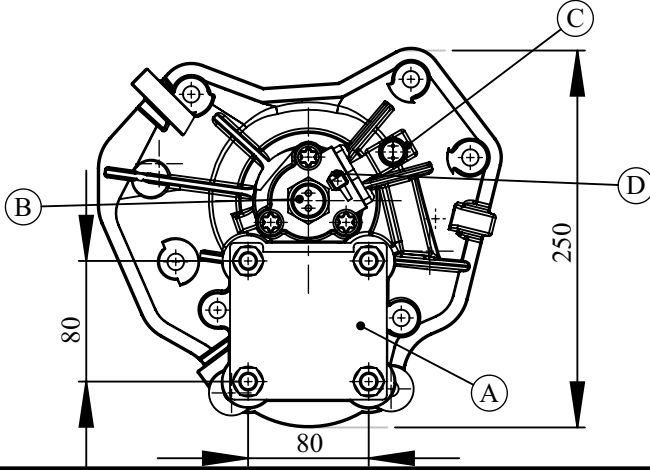
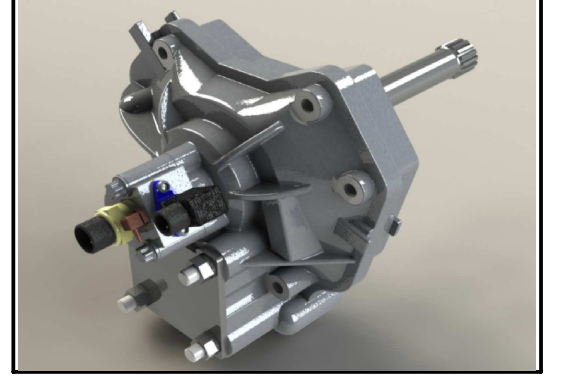
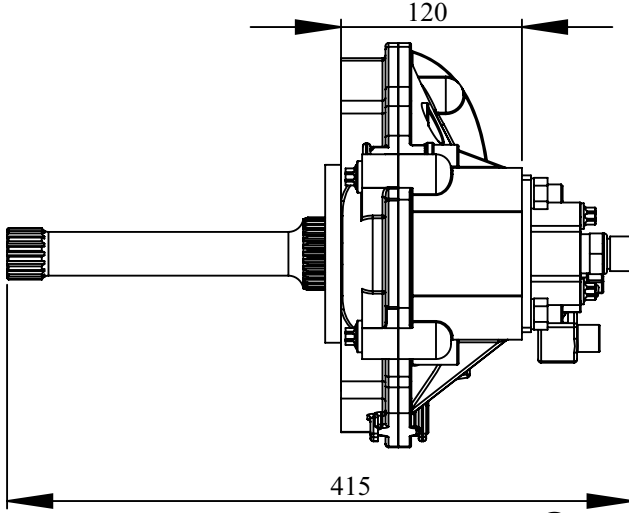
**Araç Tipi / Vehicle Type:**  
MERCEDES AXOR-ACTROSS DAMPER VE TANKER KAMYONLARI İÇİN  
MERCEDES AXOR-ACTROSS FOR DUMPER AND TANKER VEHICLE

**Şanzıman Tipi / Gearbox Type:**  
G 210,211,240,260- 16(17.03-11.9.75) G221-9 (16.02) G131-9

**Ürün Adı :/ Product Name:**

**MB.9**

### ÜRÜN GÖRÜNÜMLERİ / PRODUCTS VIEW



### OPSİYONLAR / OPTIONS

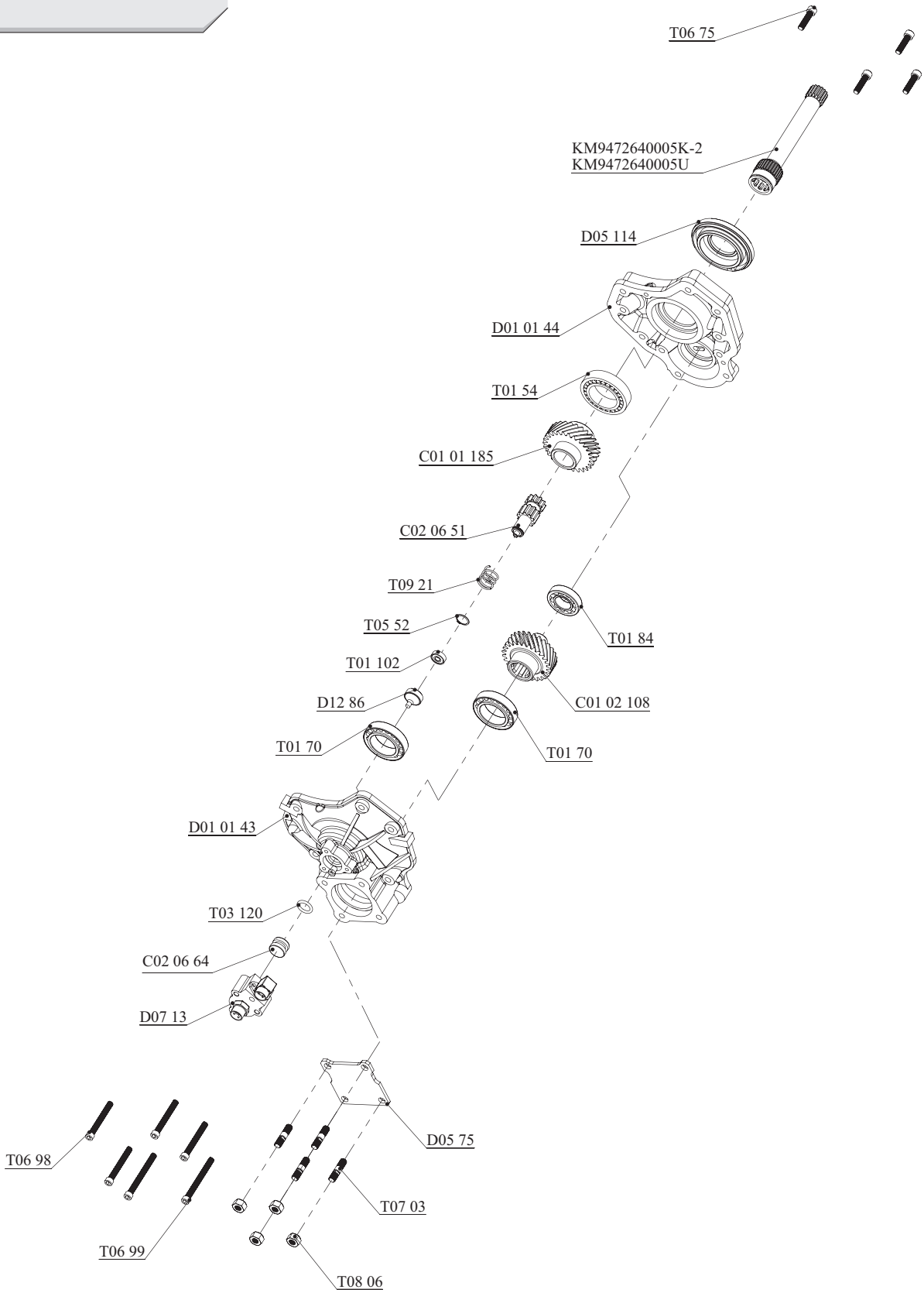
A: Çıkış  
B: Elektrik Müşürü  
C: Hava Basınç Valfi  
D: Hava Girişi

A: Output  
B: Passing Contact Switches  
C: Air Pressure Valve  
D: Air Inlet

### TEKNİK BİLGİ / TECHNICAL DATA

Güç (Kw) (Power) 1000 Dev./Dak.	Maksimum Tork (Max. Torque) Nm Kgm		Çevrim Oranı (Ratio)	Bağlantı Şekli (Mounting Side)	Kumanda Kontrol (Control Type)
42	400	40	1/1.03	Kuyruk (Rear)	Havalı (Pneumatic)
				Ağırlık (Kg) (Weight)	Dönüş Yönü (Rotation Sense)
				12,5	Sol ANTIENGINEWISE (CCW)

# MB.9.240

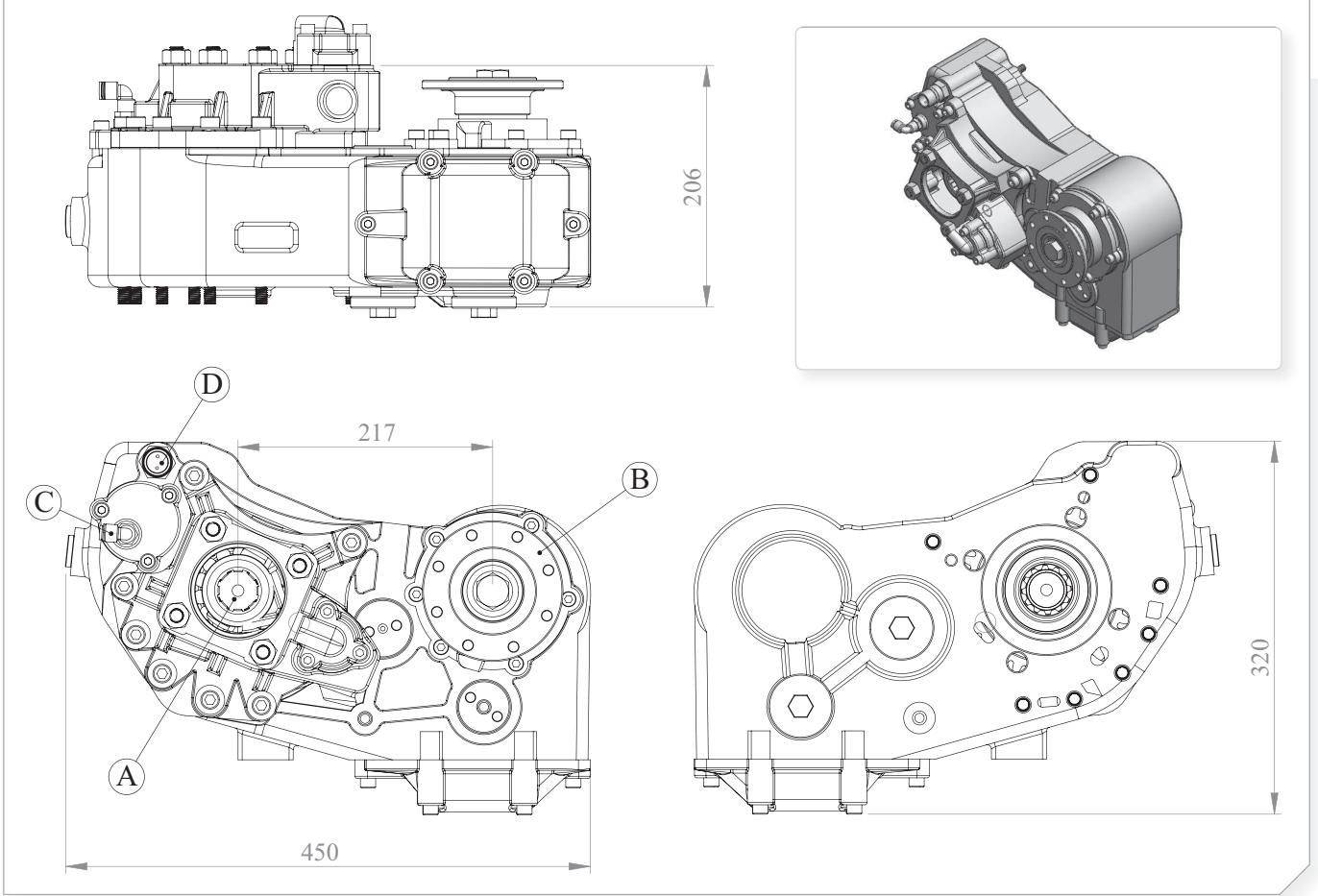


<b>Araç Tipi</b> Vehicle Type	MERCEDES AXOR-ACTROSS FOR FIRE FIGHTING, FOR CESSPIT EMPTIERS VEHICLES
<b>Şanzıman Tipi</b> Gearbox Type	G155 GV4

Ürün Kodu / Product Code

**MB.10.465**

Ürün Görünümleri / Products View



Opsiyonlar / Options

- A:** PTO Çıkışı (Standart DIN 5462 8X32X36 ISO 4 Delikli)  
Dişli pompaya akuple (3 delikli UNI bağlantı)  
Kaplinli (flanşlı bağlantı)
- B:** Flanş, DIN 120-DIN 100
- C:** Hava Girişi R1/4"
- D:** Elektrik Müşürü

- A:** PTO Output (Standard DIN 5462 8X32X36 ISO 4 Bolt)  
Direct mounting UNI 3 bolt mtg. adapter  
Drive flange
- B:** Flange, DIN 120-DIN 100
- C:** Air Inlet R1/4"
- D:** Passing Contact Switches

Teknik Bilgi / Technical Data

Güç / Power (Kw)	Maksimum Tork / Maximum Torque (Kw)		Çevrim Oranı Ratio	Bağlantı Şekli Mounting Side	Kumanda Kontrol Control Type
	Nm	Kgm			
1000 Dev./Dak.					
100	955	97	1/1.78	<b>KUYRUK / REAR</b>	<b>HAVALI / PNEUMATIC</b>
				<b>Ağırlık / Weight (Kg)</b>	<b>Dönüş Yönü / Rotation Sense</b>
				60	<b>SOL / COUNTERCLOCKWISE (CCW)</b>

# MB.10.465





Araç Tipi  
Vehicle Type

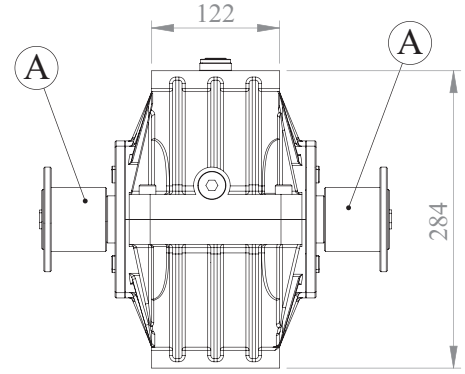
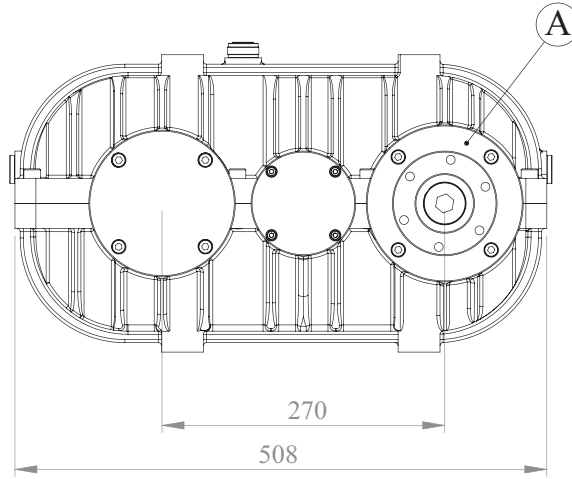
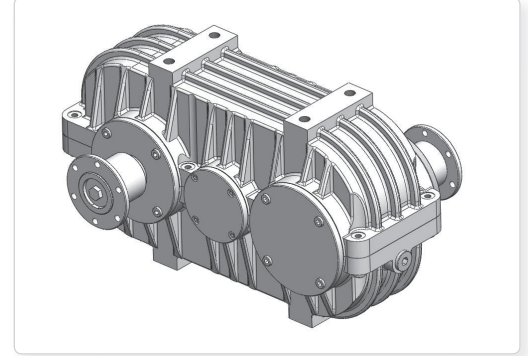
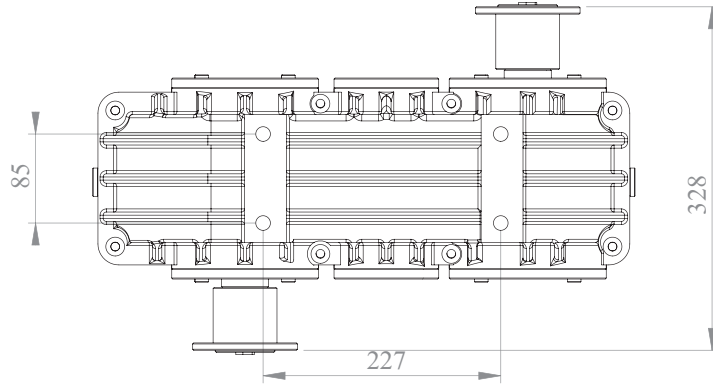
ÜNİVERSAL REDÜKTÖR / UNIVERSAL REDUCTOR

Şanzıman Tipi  
Gearbox Type

Ürün Kodu / Product Code

KRD.01

Ürün Görünümleri / Products View



Opsiyonlar / Options

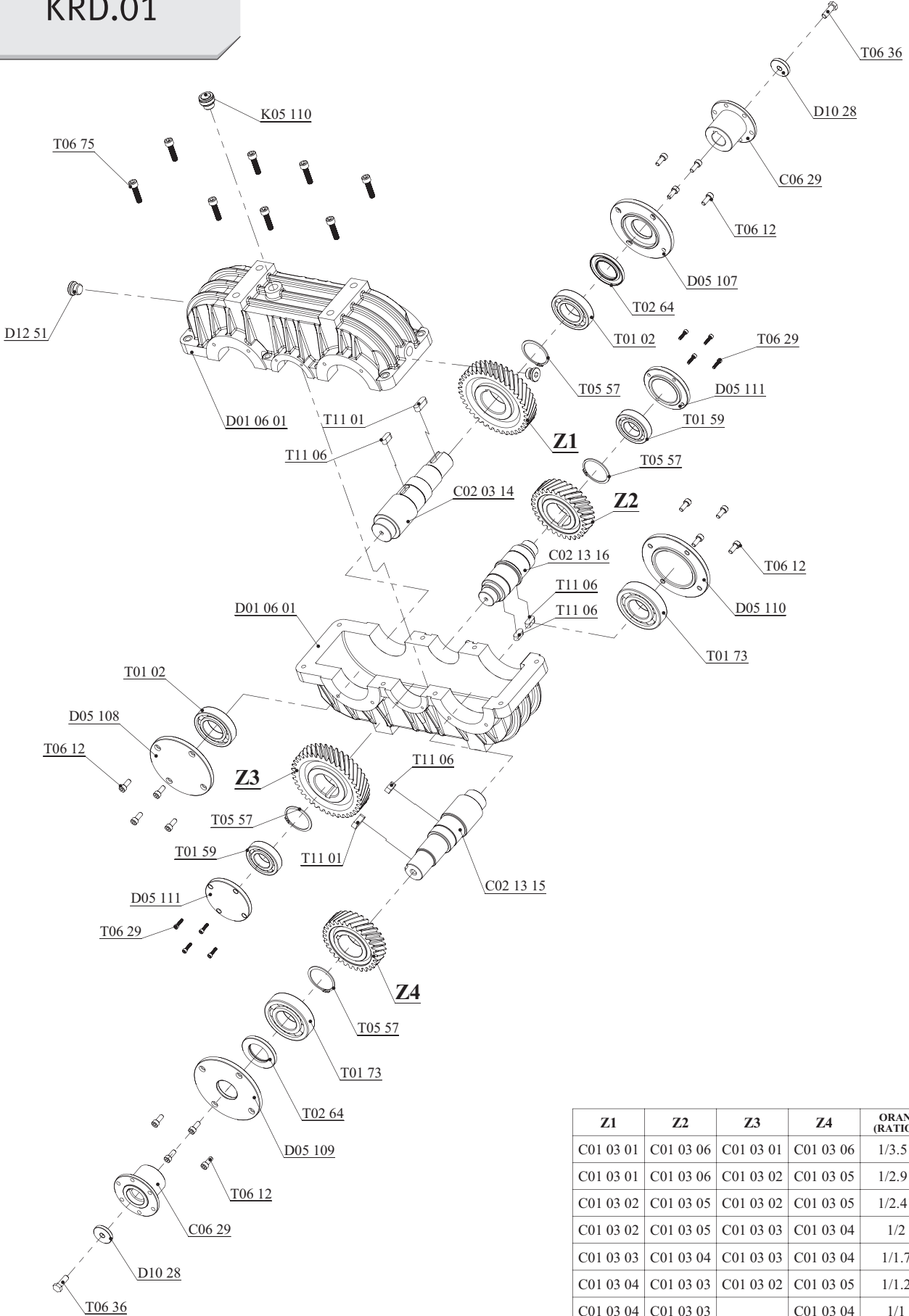
A : Redüktör Giriş ve Çıkış Flanşı (DIN100 6Delikli)  
(Opsiyonel)

A : Reduktor Input and Output Flanged (DIN100 6Bolts)  
(Optional)

Teknik Bilgi / Technical Data

Güç / Power (Kw)	Maksimum Tork / Maximum Torque (Kw)		Çevrim Oranı Ratio		Bağlantı Şekli Mounting Side	Kumanda Kontrol Control Type
	Nm	Kgm				
1000 Dev./Dak. 50	477	48	1/3.51	1/1.7	ŞAFT / SHAFT	DİREKT / DIRECT
			1/2.91	1/1.2		
			1/2.41	1/1	Ağırlık / Weight (Kg)	Dönüş Yönü / Rotation Sense
				43	SAĞ - SOL / CW - CCW	

# KRD.01



Z1	Z2	Z3	Z4	ORAN (RATIO)
C01 03 01	C01 03 06	C01 03 01	C01 03 06	1/3.51
C01 03 01	C01 03 06	C01 03 02	C01 03 05	1/2.91
C01 03 02	C01 03 05	C01 03 02	C01 03 05	1/2.41
C01 03 02	C01 03 05	C01 03 03	C01 03 04	1/2
C01 03 03	C01 03 04	C01 03 03	C01 03 04	1/1.7
C01 03 04	C01 03 03	C01 03 02	C01 03 05	1/1.2
C01 03 04	C01 03 03		C01 03 04	1/1

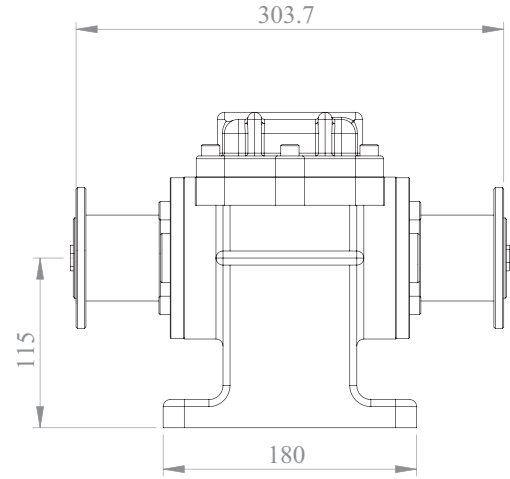
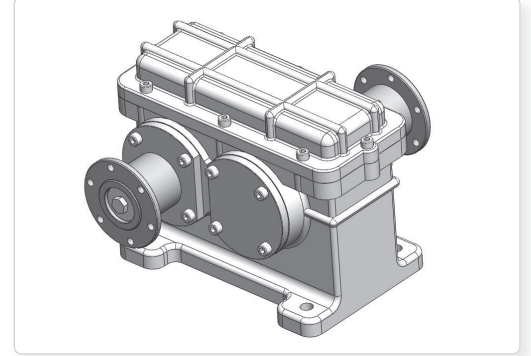
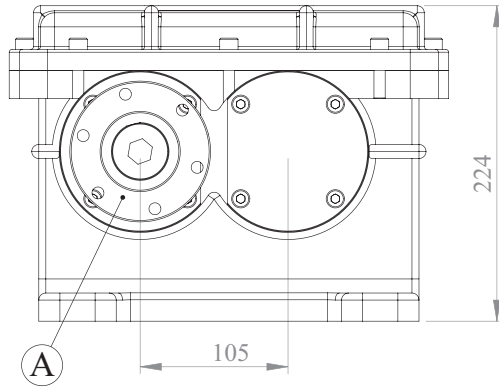
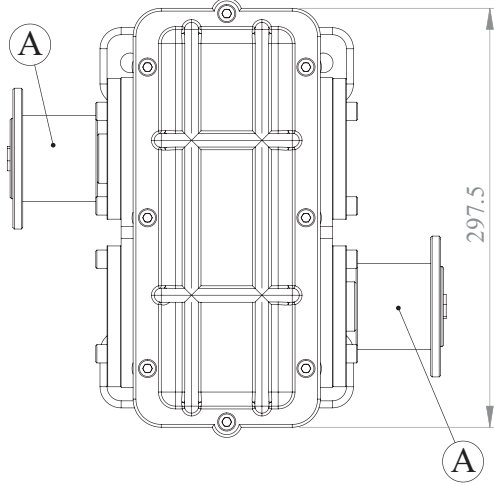
Araç Tipi  
Vehicle Type

ÜNİVERSAL REDÜKTÖR / UNIVERSAL REDUCTOR

Ürün Kodu / Product Code

KRD.02

Ürün Görünümleri / Products View



Opsiyonlar / Options

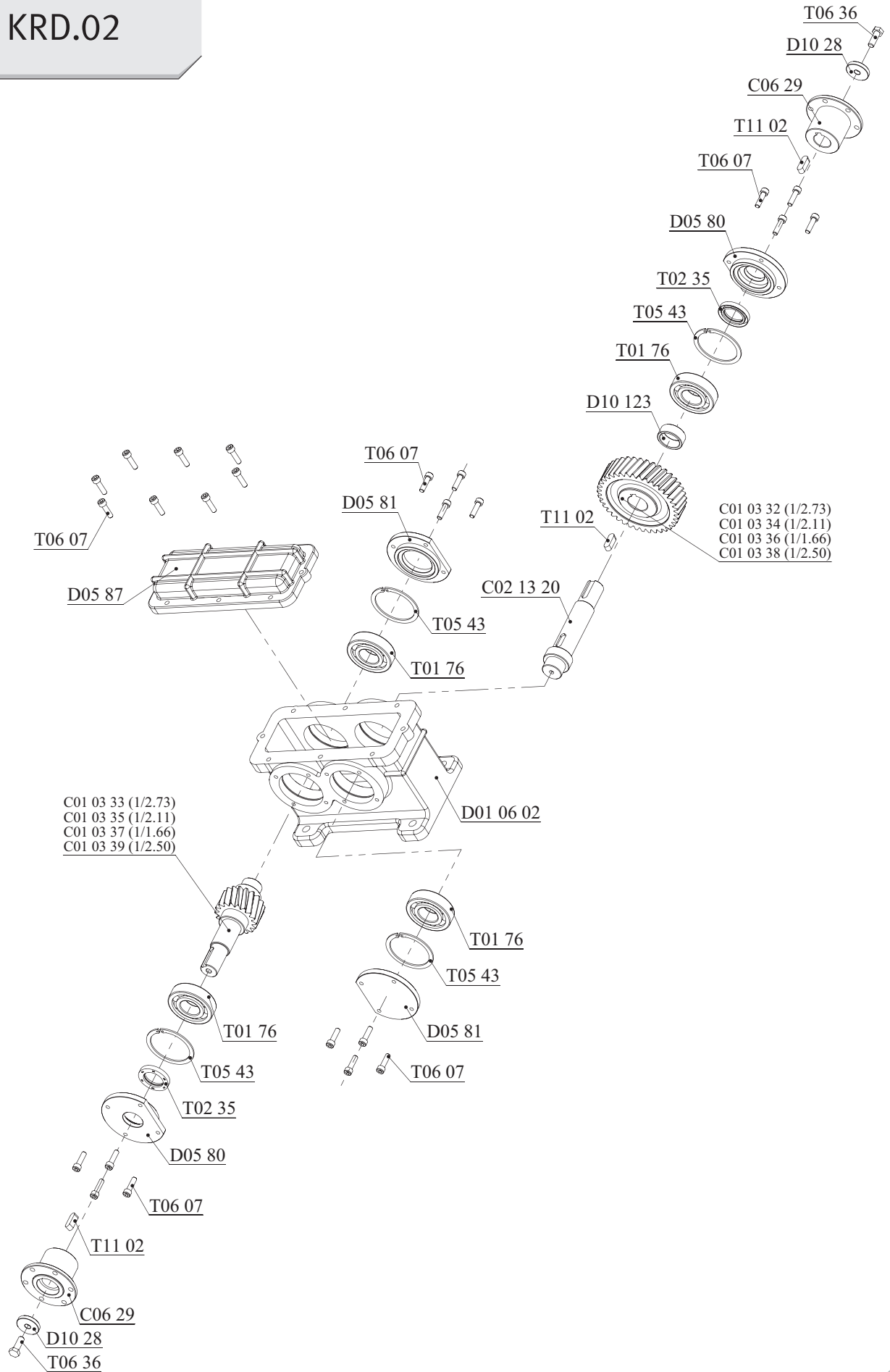
A : Redüktör Giriş Ve Çıkış Flanşı (DIN100 6Delikli)

A : Reductor Input and Output Flanged (DIN100 6Bolts)

Teknik Bilgi / Technical Data

Güç / Power (Kw)	Maksimum Tork / Maximum Torque (Kw)		Çevrim Oranı Ratio	Bağlantı Şekli Mounting Side	Kumanda Kontrol Control Type
	Nm	Kgm			
1000 Dev./Dak.					
49.8	475	48.5	1/1.66	ŞAFT / SHAFT	DİREKT / DIRECT
42.3	403.8	41.1	1/2.11		
37	353	36	1/2.50	Ağırlık / Weight (Kg)	Dönüş Yönü / Rotation Sense
34.3	327.7	33.4	1/2.73		
				36	SAĞ / CLOCKWISE (CW)

# KRD.02



Araç Tipi  
Vehicle Type

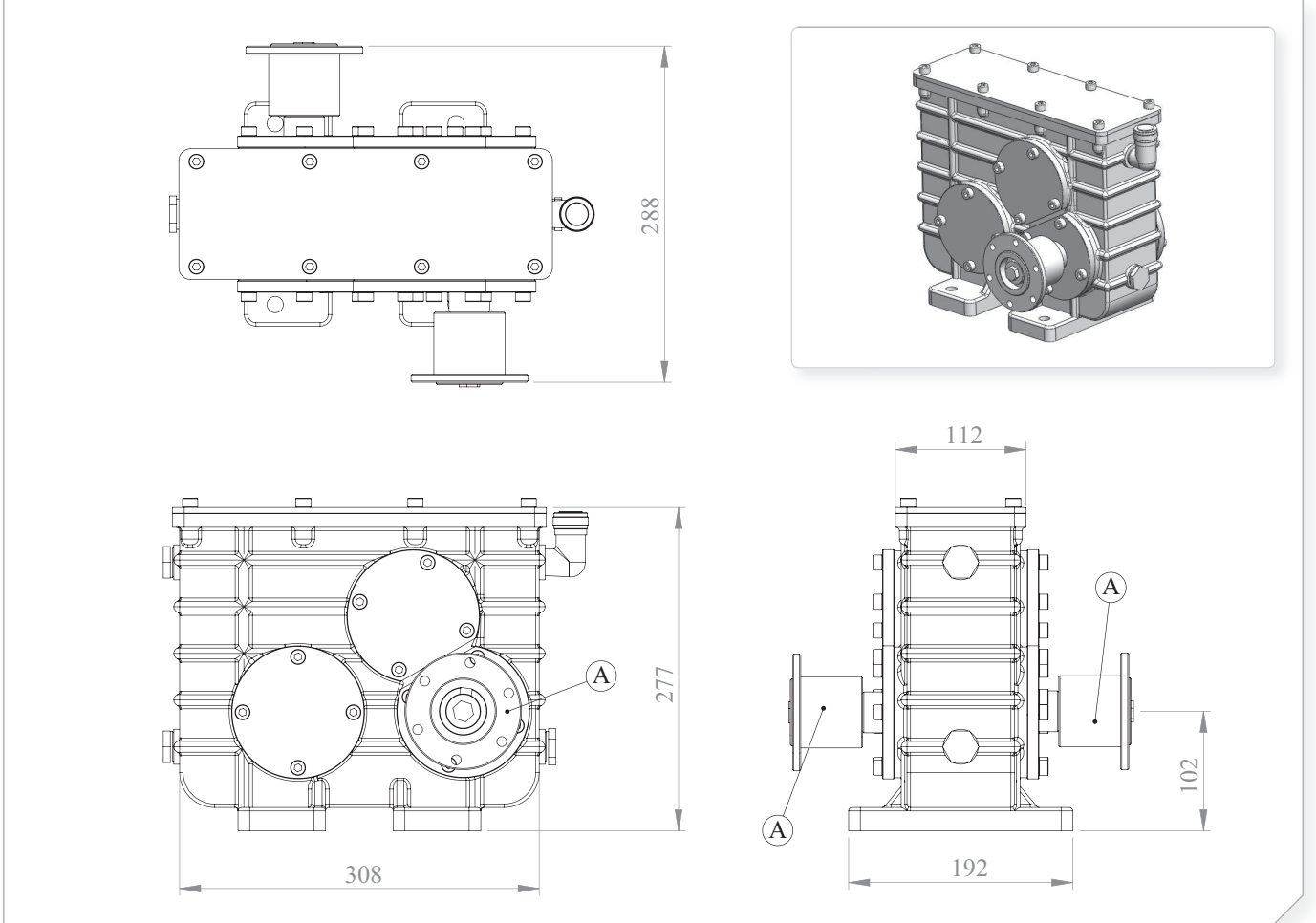
ÜNİVERSAL REDÜKTÖR / UNIVERSAL REDUCTOR

Şanzıman Tipi  
Gearbox Type

Ürün Kodu / Product Code

KRD.03

Ürün Görünümleri / Products View



Opsiyonlar / Options

<b>A : Redüktör Giriş Ve Çıkış Flanşı (DIN100 6Delikli)</b>	<b>A : Reduktor Input and Output Flanged (DIN100 6Bolts)</b>
---	--

Teknik Bilgi / Technical Data

Güç / Power (Kw)	Maksimum Tork / Maximum Torque (Kw)		Çevrim Oranı Ratio	Bağlantı Şekli Mounting Side	Kumanda Kontrol Control Type
	Nm	Kgm			
1000 Dev./Dak.				<b>ŞAFT / SHAFT</b>	<b>DİREKT / DIRECT</b>
50	477.5	48.6	1/1.91	Ağırlık / Weight (Kg)	Dönüş Yönü / Rotation Sense
				42	<b>SOL / COUNTERCLOCKWISE (CCW)</b>

# KRD.03

